

BAM

September-October 2009



Concept drawing for Tom Clark Memorial Sculpture

www.bamsite.org

Contents

Editorial

5 From the Editor

Cameron, MO

6 Minutes from the September meeting.

President Letter

7 President Ken Jansen

Wheelwright

8 The basics on making a wheel

Gotta have more

10 Cowbell demo

Roster

R 1-12 pull out section

Sculpture

12 Tom Clark Memorial Sculpture

Shop Tip

13 Home made paint shaker

Frank Turley

14 Doug Hendrickson memorial demo

ABANA

15 ABANA Ring project.

Classified Ads

16 Buy, Sell, Trade

MTS

19 MTS Workshop schedule

Scheduling

19 Upcoming Events

Liberty

20 Directions to next meeting



The Cove: Concept drawing for the Tom Clark Memorial Sculpture. Story on page 12.



BAM goes Renaissance page 11



ABANA letter Pg 15.



COAL locations pg 18



Meeting Map pg 20

**Newsletter of the
Blacksmiths
Association
of Missouri**

Volume 26 No. 5
SEPTEMBER-OCTOBER

2009
Editor
Bob Ehrenberger

Contributing Writers
Larry Hults(roster)
Chris Durrill
Don Anders (minutes)

Photo Contributions
Bob Ehrenberger
Chris Durrill
Tsur Sadan

President's Message
Ken Jansen

Mailing Labels
Bruce Herzog

The Newsletter of the Blacksmiths Association of Missouri is published six times a year and is mailed to members of BAM. The annual fee for regular membership is \$25/year; a portion of this amount is for a subscription to this newsletter for one year. Editorial inquiries should be addressed to: **Bob Ehrenberger 6192 Hwy 168 Shelbyville, Mo 63469 or e-mail to bameditor@centurytel.net**

BAM membership inquiries should be addressed to: **Bruce Herzog, 2212 Aileswick Dr., St. Louis, MO 63129; (314) 892-4690 or send e-mail to bjherzog@msn.com.**

Occasionally some material will be copyrighted and may not be reproduced without written consent by the author. BAM welcomes the use of any other material printed in this newsletter provided the author and this organization be given credit.

Membership Application

Name: _____
Address: _____
City: _____ State: _____
Phone: () _____ Zip: _____
E-mail: _____

New Member Renewal ABANA member?
How did you learn about BAM? _____

Memberships are for one year from receipt of dues. Dues are \$25, which includes a subscription to the bimonthly BAM newsletter. Please make checks payable to Blacksmith Association of Missouri.

ABANA Membership Application

Primary ABANA Chapter Affiliation: _____

Name: _____
Address: _____
City: _____ State: _____
Phone: () _____ Zip: _____

New Member Renewing Member

Includes a Subscription to the Anvil's Ring and The Hammers' Blow magazines

Regular Member.....\$55 yr.
 Senior Citizen (Age 65+)\$50 yr.
 Full time student.....\$45 yr.
 Overseas airmail.....\$80 yr.
 Overseas surface mail\$65 yr.
 Contributory\$100 yr.
 Public library\$45 yr.

See reverse

From the Editor

By Bob Ehrenberger

Again we had a cool summer which made for nice forging conditions. I took most of August to work on my house, so the north wall of my cellar has now been poured. This gives us more room under the house and makes me feel a little more secure about the situation. With that said, I'm looking forward to the fall season with cool dry weather, more great forging ahead. If you participate in a fall festival, consider submitting a write-up and pictures for the newsletter.

We had a great meeting at Matthew Burnett's. I learned a lot about wooden wheels. We also had a nice showing of trade items. I took this opportunity to try a water leaf like Mark Aspery made at conference. It is a lot harder than it looks.

In the last newsletter I made a comment about retiring if Social Security was still solvent. Some of our members thought that was too political for a blacksmithing newsletter. It was meant to be humorous and I know that the SS will be there when I need it. Please accept my apology for wandering so far off topic. While I'm talking politics I would like to say that the "Cap and Trade" bill concerns me a lot. It proposes to charge a heavy sur-tax on fossil fuels like coal. There is a good chance that it will put blacksmiths out of business. I am going by what I have heard and have not read the bill myself. If anyone has an analysis of Cap and Trade from a blacksmithing point of view I would like to see it. This could affect us all.

I am glad to report that my power hammer is still running fine. I have added to the tooling for it and will put in some pictures if I have room in the newsletter. It was a year ago next week that it broke down. With the fall show season just coming up to speed, I really need to have it running.

Karen has continued to work on BAM's library, it is nice to see it getting some use again. I have been passing the ABANA affiliate newslet-

ters on to her and she has put them in binders to check out. She has also gotten a complete set of BAM's newsletters that you can check out.

As many of you remember, when Doug Hendrickson died, donations were taken in his name. It was decided about a year ago that instead of just giving a couple members scholarships that we would bring someone in that could teach all of us something. Well the process is just about



complete. Frank Turley has agreed to come to Missouri and teach a class which will be open to all BAM members. He will be at Lou Mueller's shop November 21 and 22. There is lots more information later in the newsletter. This is an event you don't want to miss. Pg 14

I met and talked to Bob Evans at Matthew's meeting. Bob is hosting the November meeting at his fab shop in Liberty MO. It sounds like this will be a fascinating meeting as Bob rolls structural steel with monster presses, COLD. He sent a picture of him by a 42" I beam, pretty impressive. Bob also said that he has a lot of drops that he usually sells to the scrap yard. He will hang on to them and make them available to BAM members. So bring

your trucks to the meeting and get some good deals on some big steel.

Joe Hurley is plowing ahead with the BAM 2010 conference plans. He still needs more volunteers. If you care about BAM continuing with conferences, step up and lend a hand.

ABANA has also put out a call for volunteers for their 2010 conference in June. They have a new twist on a ring project and need submissions for that. Pg 15

In the last newsletter I mentioned that the Missouri Arts Council offered scholarships for their Traditional Arts Apprenticeship Program (TAAP). I have applied to get into TAAP but won't know if my application is selected for another month or so. If any of you get in, I would like to hear from you, and would really like an article on your experience with TAAP.

The submission deadline for the November/December issue is November 14. There are still a couple meeting dates open for next year. If you are interested in hosting a meeting in September or November, please let Ken know. As far as that goes, if you want to host the July meeting I wouldn't mind taking a year off.



Some of the trade items, see the rest on page 17.

BAM MEETING MINUTES

By Don Anders

September 2009 at Matthew Burnett's

Demo by Richard Stubblefield—cowbell made from scrap barrel metal and brazed together.

Demo by Riley Rice -wagon wheel making.

Demo by Matthew Burnett-abstract human form.

TRADE ITEM LEAF

Made by

Ken Jansen
Don Anders
Paul Ladas
Bob Ehrenberger
Thomas Ratliff
Bob Evans
Seth Lancaster
Michiah Lancaster
Bernie Tappel
Herb Route
Al Scott
Larry Lutz
Burt Mannell
Matthew Burnett
Joe Hurley
Dan Whitmore
Richard Pope
Mike McLaughlin
Walt Hull

Traded to

Walt Hull
Paul Ladas
Ken Jansen
Richard Pope
Bernie Tappel
Burt Mannell
Al Scott
Harry Weber
Bob Forg
Michiah Lancaster
Joe Hurley
Seth Lancaster
Don Anders
Dan Whitmore
Mike McLaughlin
Thomas Ratliff
Matthew Burnett
Bob Ehrenberger
Larry Lutz

Iron in the Hat

Donated by

Seth Lancaster
John Sappington
Burt Mannell
Mike McLaughlin
Richard Stubblefield
Chris Owen
Richard Pope
BAM conference
Harry Weber
Bernie Tappel
Larry Hults
Phil Cox
Harry Weber
Ken Jansen
Joe Hurley
Richard Pope
BAM Library
BAM Library

item

horse head knife
hay rake tine
Blacksmith J. tape#2
office chair
cow bell
ENCO Catalog
hay tines bar
forged hooks
spring & saw blade
2 springs
Magazines
Tom C. model anvil
rod pins
star drills
RR spikes
tines
old news letters
old news letters

won by

Mike Jones
Karen Bouckaert
Joe Hurley
Don Anders
Burt Mannell
Seth Lancaster
Larry Hults
Richard Pope
Paul Ladas
Burt Mannell
Kent Harbit
Paul Ladas
Don Anders
Al Scott
Mike Jones
Mike McLaughlin
Mark Lawson
Harry Weber

BUSINESS MEETING

ABANA conference, please visit ABANA website for info and attend if you can. Best conference prices available now, will increase as the conference nears.

BAM has ABANA IRON IN THE HAT TICKETS the items are Spare Tire Power hammer, Nimba anvil, and a BAM BOX by Pat McCarty.

ABANA is looking for volunteers for the 2010 conference, please consider.

Doug Henderson Memorial Demo, by Frank Turley will be the Saturday and Sunday before Thanksgiving (Nov. 21,22) at Lou Mueller's shop. Please watch BAM web site for additional info. This is a free Demo, but please consider a donation to fund future Demos.

Thanks to all that worked at the 2009 Missouri BAM State Fair tent.

Also thanks to all BAM members that worked the Hamilton Steam Engine Show.

The BAM 2010 conference update was given by conference chair Joe Hurley. The Conference planning is on track for another great conference. Please volunteer to make the 2010 BAM conference another great one, everyone is needed for small and large positions.

All BAM board positions open and available, please contact Ned Digh if you are interested.

BAM gas forge buy still moving forward. Chile Forge and Diamondback are the finalist. If you are interested, please contact Ken Jansen, e-mail works the best.

BAM coal forges, should we replace with more portable ones or remodel? We are currently researching a remodel to make them easier to pack into the BAM trailer.

Treasurer's report was given by Ken Jansen for Bruce Herzog. BAM currently has 547 members; please take any opportunity to promote BAM.

Letter from the president

By Ken Jansen

Well another summer is past and the cooler weather is here again. We have had some beautiful weather for the State Fair and had a pretty good showing from all reports I have heard. When I was out there, we had a pretty steady flow of people. They moved the tram stop back by us and we caught a lot of people getting off the tram, signed up new members and stirred a lot of interest. There were some interesting pink tools and a pink anvil there being used. I need to say thanks to those who are instrumental in pulling this off. They are in no particular order; Dennis Yates, Don Nichols, Kent Harbit, Jon Peterson, Peggy Williamson, John Huff, Scott Stager, Karen Bouckaert, and Don Anders. I am sure I have missed some and I apologize for that, but thanks to all for making it a successful event.

I was able to make the Hamilton Steam and Gas Engine Show on my trip to the State Fair we had a good time there as well. Phil setup a Little Giant on his flatbed trailer and we ran it at the event a few times, I think Phil is going to look into beefing up the area of the trailer it was mounted too or make some blocking under it, cause it bent the frame down a little directly under the hammer. We had a nice steady crowd through there and we were right on the way in so we were easy to find. We had some awesome shade trees to sit under so it didn't get too hot. We had Phil's coke forge and that was a new experience for me, I never ran just coke in a forge, I use coal. There was also the 200 lb. Bradley hammer sitting up in the corner of the building nearby that was a sight to behold. They are in the process of putting up some buildings for their antique town and I think the blacksmith is the second one on the list, the first being the sawmill that will be cutting the lumber.

For any of you that have an opportunity to do it, I recommend you go up there and check it out. It is in the middle of August each year, as I understand it.

The ABANA conference is moving along. Keep checking the ABANA website for updates. I have been told and it was confirmed by Phil Cox at the last meeting, I believe that the early registration will be 199.00 if registered by December 1st. They are looking for volunteers to help with the demonstrators and the auction last I heard, the contact is Ken Preiser, again you can go to the ABANA website for more information.

We had an awesome meeting at Matthew Burnett's and some wonderful chili. I think the comment was made before that bad can't be had at one of his meetings, I can vouch for that so far. We had some awesome Demo's one on how to make a cowbell and tune it and one on how to build a wooden wheel and shrink a tire on it. I was amazed at how far the steel stretches when heated, I know it does and have to compensate for it all the time but it just never really jelled with me until I saw how much room there

was around the rim after it was heated. Matthew also did a demo on stylized human forms but I was tied up with a conference meeting and missed it. During the business meeting we discussed the possibility of keeping the scholarship going that Doug Hendrickson started. This was the one that we spent some time discussing and decided that we were going to have a demo this November by Frank Turley at Lou's shop in Sunset Hills. We are going to ask for donations at this event to raise money for a future event and it will be a scholarship type of thing but instead of one person getting it, it will be for the organization and any that can attend are welcome. We are working on the mechanics of how it would work, and once the board has a good idea of how it will work, we will bring it back to the membership for approval probably at a meeting.

We are having the Frank Turley demonstration the weekend before Thanksgiving, it is Saturday all day and Sunday at least a half day, maybe more if there is interest.

Our conference is coming along, but Joe really needs volunteers to assist him with it. We only have some of the positions filled and it is time to get on board. This is for our own benefit. Those of you who have not served really need to get involved. There is a level of involvement available for all.

That brings me to something that I found interesting. I was reading some older newsletters from the early to mid 90's and noticed a theme. At pretty much every meeting there were 50 people. I am not sure but I think we are averaging around 30 to 40. The membership is larger but the numbers that are attending the meetings is less. I would be really interested in anyone's thoughts as to why this might be.

I will be having a hammer-in at my shop the Friday after Thanksgiving. The actual theme is to be determined, but it is down to two possibilities, one is to work on the auction item for next year's conference and that is a garden arbor/trellis thing that will be decorated with items from the garden, no larger than life size, (none of you smart alecks better bring a tractor either) we will probably concentrate on building the frame at this hammer-in. The other is a surprise if it can be worked out.

Well that is all I have for now.

Happy forging.

Ken Jansen
President,
Blacksmith Association of Missouri

A Wheel Of a Good Time

By Bob Ehrenberger

Riley Rice brought his wheel bench, tools, wheels, pieces, and everything else needed to teach us the basics of being a wheelwright. As Riley put it, all wheels have to have 4 parts: hub, spokes, felloes, and tire.

This is true from a toy wagon all the way up to a heavy cargo wagon. The parts need to be there even though they may look different due to the application.

When building a wheel you start with the hub.

On the older wagons the hub was a solid piece of elm wood. It would be turned on a lathe and then set aside to dry. It would take one year for

every inch of diameter to fully cure.

So you had to plan ahead at least 2 years maybe as much as 5. A wheelwright would have a back room filled with hubs waiting to be finished. When finishing, a hub would be mortised to accept the spokes, bored for the axle sleeve called boxing and banded to prevent cracking and splitting. On newer hubs they had a metal flange with a wooden core. On the newest style hub they just had the metal flanges with no wood in the center.

In the old days the spokes were made by hand with a draw knife and spoke shave. Nowadays there are places where you can buy pre made spoke blanks. Riley said that if you order in quantity you can get them as cheap as \$1 each for a standard size. He said that if you need an odd size you can send them one spoke and they can make a set to match. The important

thing about spokes is they have to have straight grain. If there is a cross grain, the spoke will break. When the spokes are made there is a slight angle built in where it goes into the hub. This is to give the wheel it's dish. Because of this angle they all have to be put in facing the same direction. The direction is made easier by the way the spoke is made there is a slight teardrop

shape to the spoke so the wheelwright can feel which side goes out.

The spokes are driven into the hub until they won't go any further. This is important because if they have any slack it will result in a loose wheel later on when it does go all the way in.

Once all the spokes are seated in the hub, they are trimmed to length and a

tenon put on the end. This is

where the work bench comes in. The spider (hub with spokes) is mounted on the bench so that it lines up with the tooling. A special tool is used to mark all the spokes the same length. Then a cone shaped cutter is used to locate the center of the spoke. Finally a tenon cutter is used to make the tenon on the end. It is important that the tenons are shorter than the holes they will go into. If they stick past the felloes, the tire will not stay tight.

The felloes are the strips of wood that go around the wheel between the spokes and the tire. On the older wheels these were made in sections that spanned two spokes at a time. The felloes would be made a little long because they had to be fitted together on the wheel. The holes were marked on the felloes in their seated position, and drilled. Then when the felloes



Riley Rice and his wheel bench

were driven into place the ends would be sawed together at the same time to make a perfect fit. On modern wheels the felloes are steamed and bent to the shape of the wheel so you only need two, with each covering half of the spokes. Once the felloes are all in place the saw is run down between them again to create a gap to allow them to tighten up when the tire is put on. This is kind of a guess since there is no way to tell how much the tire will shrink.

Finally the tire is put on. The tire is a steel (iron) band that holds the wheel together and gives it a tough wearing surface. The tires are rolled into shape on a tire bender. Usually the bar is cut a little long because the end doesn't bend right and needs to be trimmed off before the tire is welded. A traveller is used to determine the outside circumference of the wheel. It is then used to check the inside circumference of the tire. You want the tire to be slightly smaller (1/4" to 1/2") than the wheel because it has to be tight. Old tires were forge welded together, the modern ones are arc welded and then ground smooth.

The tire is then heated to make it expand so that it can be placed over the wheel. Riley demonstrated this using a straw fire because the tire to be heated was thin. On heavy tires you needed a wood or coal fire to

get them hot enough. He fired the tire three times, he said you usually need at least 2, the first dries out the ground, the second heats the tire. Once it is hot, the tire is placed over the wheel. His tongs had a bent screw driver on the end of the reins which was

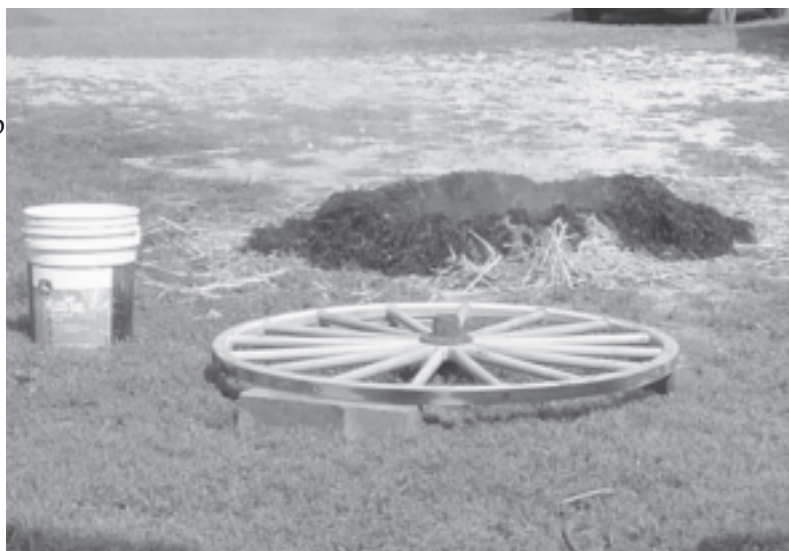
used to pry the tire into place. I had seen these on tongs before but never knew what they were for. Once the tire is in place it is cooled. Riley said to cool it a little at a time so that you don't harden the steel which might then break and to give you time to get the position just right while things will still move. Before the tire

was cooled there were spots where there was a considerable gap between the wood and the steel. As things were cooled down Riley tapped on the tire and the wheel to get them lined up.

As the tire tightened up, the dish developed on the wheel. If the tire is too tight the dish will go too far and could ruin the wheel, so it is important to get the right amount of

shrinkage (can we say experience). The dish is important because the axles are set at an angle to keep the wheel from working back and fourth. On some modern wheels they use roller bearings which run true, these wheels don't need to be dished, or not very much.

Finally the felloes are riveted to the tire.



top to bottom. Heating tire, Cooling, Final adjustments.

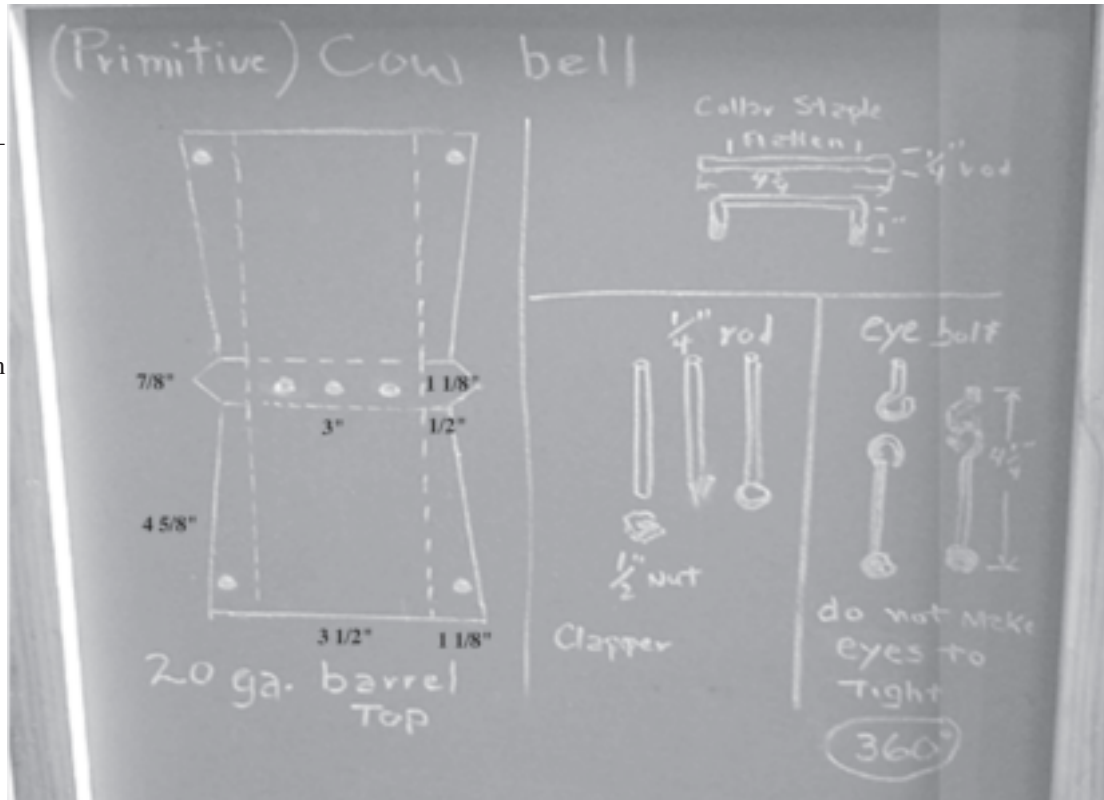
Richard Stubblefield Cow Bell Demo By Bob Ehrenberger

Richard drew out all the parts needed to make a cow bell. I added in the necessary dimensions for a standard bell.

He starts by making the clapper and collar staple. This way you can locate the holes to match the staple and not have to make the staple match the holes. It is important that the eye bolt is not too tight, you want the clapper to have 360 deg of movement.

Next he makes the bends at the top of the bell (center of the pattern). He made a simple break by welding a hinge to a chunk of angle iron. Do not bend all the way at this time, maybe 2/3s the way.

While the bell is still clamped in the break, use the special tongs (with flat jaws) to bend in the sides. Do not make sharp bends, they should have a radius to them.



Before closing up the bell, braze in the clapper and the handle.

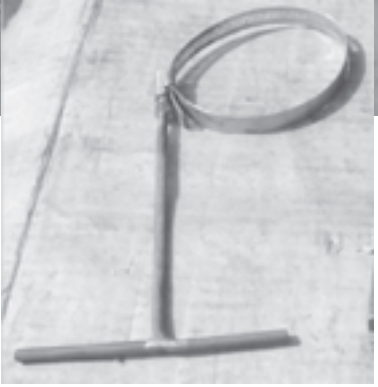
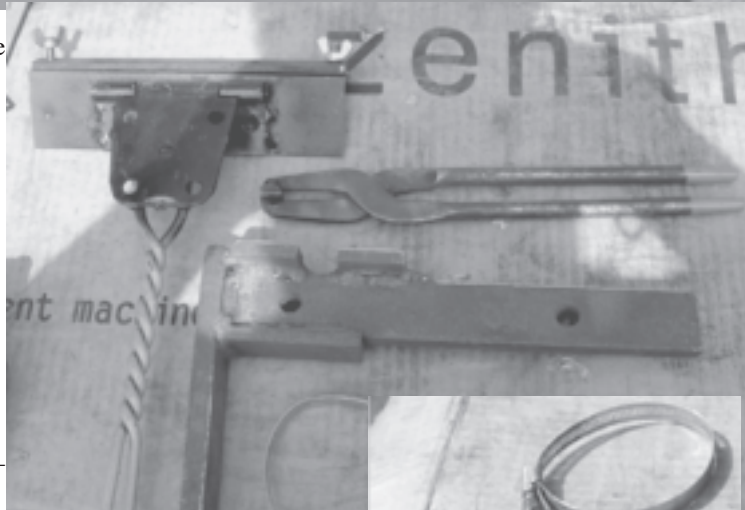
You can close up the bell by pushing the sides in by hand.

Richard uses a special clamp made by brazing a T handle to a hose clamp to hold the sides together. Line up the holes and use an 8 penny nail for a rivet on the corners.

The side seams are flattened and the tabs folded in on a special mandrel made of heavy bar stock.

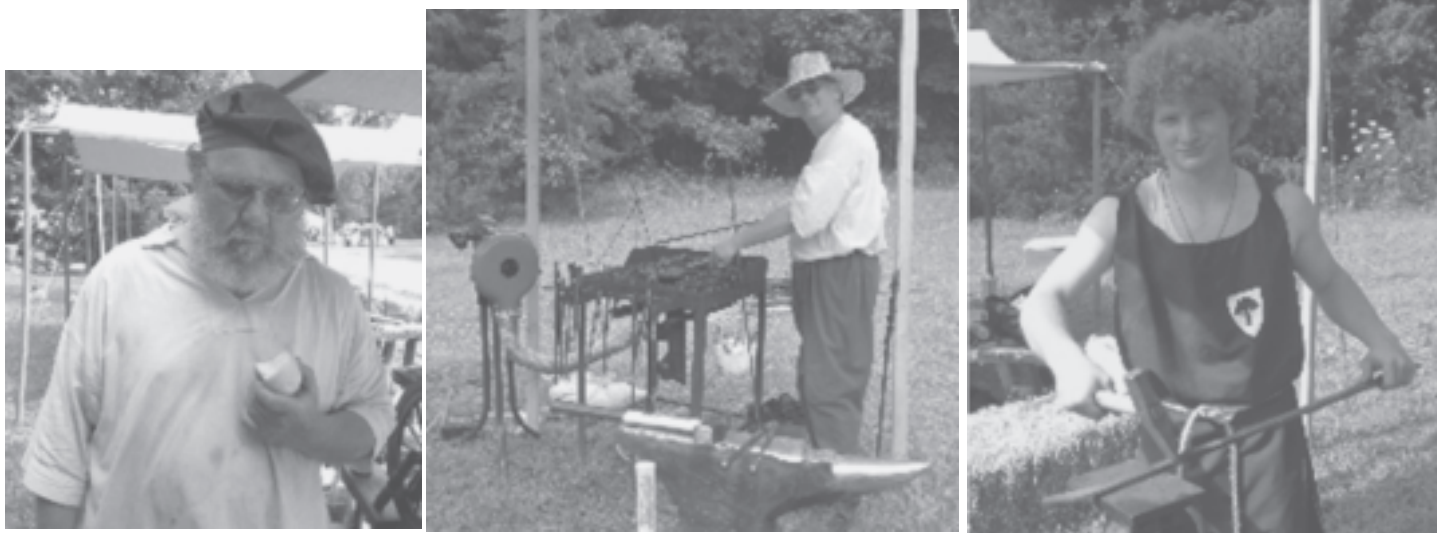
If the bell rings, great, you are done. If it doesn't ring, braze the tabs down. If it still doesn't ring, braze the side seams. The tone can be adjusted by quenching the hot bell a little at a time until you like the pitch. You can also adjust the pitch by rounding up the seams on the horn of your anvil.

See finished bell on page 13.



BAM Members Demonstrate Craft at Jefferson City Renaissance Festival

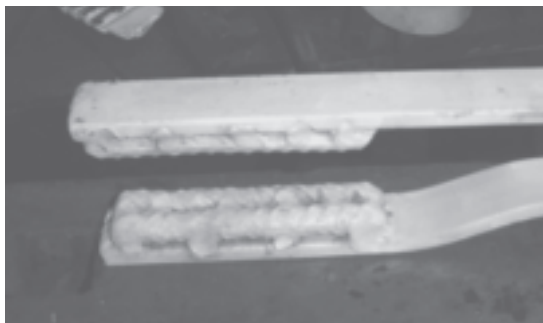
Scott Stager, Edward Durrill, and Colton Jones demonstrated blacksmithing at Missouri River Regional Library's 10th annual Renaissance Festival at Binder Lake Park on June 20, 2009 as part of I.H.E.A. (Kansas City's Institute of Historic and Educational Arts) living history demonstration. Two forges were kept going simultaneously as all three interacted with the visiting crowd by answering questions and demonstrating basic techniques. I.H.E.A.'s living history demonstration that day also included wool spinning, Renaissance era carpentry, an herb display, and bobbin lacemaking. -Chris Durrill



After the meeting Matthew Burnett gave a talk on one of his projects. He had been commissioned to make a set of trophies for a local festival. Another artist did the initial concept drawings and then turned it over to Matt to implement. Generally speaking, the trophies are a stylized representation of the human form. The project required several different techniques, half lap joints, pass throughs, and tenons.



I recently made two texture tools for my power hammer. The first one (below) was made with re-bar on the surface. When I used it cold the re-bar was not tough enough, so it will have to be a hot work tool.



The second one uses a piece of sucker rod that I flattened into an oval shape. I've used it to cold texture several pieces and it doesn't show any signs of wear. This one would also be useful as a radical drawing die. Bob



Tom Clark Memorial Sculpture

The Memorial sculpture was a team work by me (Tsur Sadan), Tim Cisneros and Frank Czech. it was forged in Tim's shop in San Francisco. The sculpture will be on display at the 2010 ABANA conference.



Shop Tip / Paint Shaker

By Bob Ehrenberger

During the busy part of the year, I make and paint a lot of product. I sometimes will use 5 or 6 cans of spray paint in one setting. After a long day at the forge, it really wears on me to have to sit and shake these paint cans. If you don't shake them well enough, you get a clogged nozzle. I've been pondering the idea for a couple of years, well this summer I got it done.

The eccentric was easy, the problem was how to hold the can. I ended up taking a piece of 1/4" rd and bending it to match the profile of the can. I then added a cross piece of 1/8 x 1 to grip the bottom. Finally, I added a clasp made from an old ski boot latch to hold the top.

At first it would just shake itself apart. The simple solution was to duct tape the connections so if there was an instant of slackness in the system, every-



Above, close up of the eccentric and connector. Initially I just had the spring hooked on a bolt. The bolt quickly wore out (10 cans), I had this small roller bearing which worked out great.



thing stayed in place. I may improve on this later, but this works.

I just used springs out of my spring can, I'm sure if I had two that matched it would be better.

For now, I just have the motor clamped to the bench and the upright support held by a vice. This lets me adjust the tension in the system by raising or lowering the support. I may be able to remove the top spring by making the support out of thinner/springier material. The current support is 3/8" rd. It only takes a minute or 2 of shaking to do the trick. I haven't had a clogged nozzle yet.



Finished demo Cow Bell, see story page 10

Frank Turley is coming

November 21-22

Doug Hendrickson Memorial Demo: Mueller Industries, 12951 Maurer Industrial Drive, Sunset Hills, Missouri 63127 Frank Turley will work on forging a top tool w/eye; a Mexican Gothic ornament “Claraboya”; forge welded rose leaves; other forge welds (not pattern welding); Fritz Kuhn style hinge; and time permitting, scroll centers. We will also talk about and perhaps DO stretches and loosening exercises related to chi gung and tai chi. The demos are open to Blacksmiths Association of Missouri members. Non members are respectfully asked for donations. Saturday 9AM to 4AM with a lunch break. Sunday 9AM to 12PM. 1PM to 3PM will be open ended; question & answer; cleanup. Contact Walt Hull: waltandruthhull@sunflower.com; or Kate: kld310@earthlink.net. www.bamsite.org

The term “claraboya” translates as a clerestory window (skylight). However, in Mexican ironwork parlance, it means two curved, scrolls joined to a Y-stem and connected to another one in order to leave an opening, all “on the diamond.” It is shown in the Spanish ironworking how-to book “Guia Practica de la Forja Artistica” with the use of an arc welder. I tried to figure a way to do it without arc welding.

Frank’s Demo honors Doug Hendrickson and is offered free to the membership through the generosity of friends who donated in Doug’s memory for the purpose of furthering our knowledge of blacksmithing. \$1,690 was donated in Doug's name. 31 people , Abana and the Wilderness Lodge Resort donated. Contributions ranged from \$10 to \$500. 9 of the contributions came from MN.

Doug was one of the founders of BAM, and one its most active and important members from then until his death in 2007. He is remembered for his persistence and dedication as a teacher, for his example as a craftsman and artist, and for his irrepressible spirit

and wicked humor. Frank Turley was one of Doug’s earliest teachers in blacksmithing, and it is especially appropriate that he be giving this demonstration.

Biography:

FRANK Turley came to blacksmithing through the back door of farriery. He began shoeing in the early 1960’s under the tutelage of Al Kremen, in Rolling Hills, California. He soon settled in Santa Fe, New Mexico, and as he began work, he found that he was beginning to take occasional orders for fireplace tools, screens, and branding irons. Turley eventually left the horses behind as he took on more blacksmithing jobs, especially those in architectural hardware, ornamental work, and in the forging of tools. He studied and worked part time for a while with master smith, Victor Vera. Turley also worked part time as a Museum of New Mexico conservator, where he was able to study early Southwestern Hispanic ironwork. This interest gave rise to a co-authored book with Marc Simmons, "Southwestern Colonial Ironwork" first published in 1980 and reprinted in 2007.



TURLEY NOTED that in the horse oriented magazines, at least 10 horseshoeing schools were advertised in each issue, but that there were no blacksmithing schools. This gave him the idea to open such a school, which he did in 1970. His students were learning about him through Stewart Brand’s popular “Whole Earth Catalog.” In the same year, Alex Bealer published “The Art of Blacksmithing.” Bealer’s book and Turley’s school helped to foster a resuscitation of blacksmithing in the U.S.



Artist-Blacksmith's Association of North America, Inc.
ABANA Central Office
15754 Widewater Drive, Dumfries, VA 22025-1212
Phone: 703-680-1632 Fax: 703-680-6222
abana@abana.org · www.abana.org

Calling all blacksmiths and metalsmiths! As part of its 2010 conference, ABANA is sponsoring another ring project. We are soliciting handmade rings for inclusion in ornamental pieces that will be auctioned off at the June conference in Memphis, Tennessee.

This year, instead of one large ring framework, conference planners are preparing three separate frameworks, each with a different theme, and each consisting of four rings. The goal is to create three great auction pieces that are small enough to hang and display in a home, business, museum, gallery, restaurant, corporate board room, shop, music studio, etc.

THE THREE THEMES ARE:

National Ornamental Metal Museum

The rings and framework of this piece will acknowledge the important presence of the National Ornamental Metal Museum in Memphis, Tennessee and classical ornamental metal work in general. Ring submissions might draw their inspiration from American or European mastersmiths.

Mississippi River

These rings will acknowledge the importance of the Mississippi River from the headwaters of Lake Itasca in northern Minnesota to the Mississippi River delta in New Orleans. Rings might include flora, fauna, fish, birds, boats, river towns, and history associated with the river.

Memphis Music

These rings will acknowledge the Memphis music scene. Rings might reference musicians (Elvis Presley), music (Beale Street blues), instruments (Gibson guitars), etc.

PURPOSE

The purpose of this undertaking is to promote friendly competition for blacksmiths and metalsmiths, to raise revenue for ABANA, and for fun and camaraderie.

CALL FOR RINGS

Anyone interested in submitting a ring (or rings) is encouraged to make and send his or her best work for possible inclusion into one of the frameworks.

Commitments are requested by November 30, 2009; however all rings are welcome at the ABANA conference. Rings must be handed in by noon June 3, 2010. To commit, contact project coordinator Rome Hutchings, The Prairie Forge, 13633 Ferman Avenue NW, Clearwater,

MN 55320, 763-878-1694. E-mail: forge@theprairieismygarden.com.

Rings received before the conference may be used for photo opportunities advertising the conference, a great incentive to contact the project coordinator and get those rings in early!

SPECIFICATIONS FOR MAKING THE RINGS

Ring size is 10" O.D. (outside diameter, and must be accurate) made from 7" x 1" steel flat stock bent the hard way.

Each ring needs space left at the 12 o'clock, 3 o'clock, 6 o'clock, and 9 o'clock positions with a minimum of 5 minutes (using the clock analogy) on either side of these positions for mounting. Refer to the sketch below.

Materials inside the ring can be ferrous or nonferrous metals.

All rings are offset from the framework 1/2" (ring construction cannot protrude greater than 1/2" towards the back side).

Selection will be based on: interpretation of theme, quality of execution using traditional forging techniques (chiseling, forge welds, rivet joinery etc.), and meeting specifications.

Twelve rings will be selected, four for each theme, from all the rings submitted.

The funds raised from the ABANA 2010 Ring Project will help offset conference costs and support the educational mission of ABANA, grants, scholarships to individuals, and special projects of an educational nature. Those ring makers whose rings are selected for one of the three frameworks will receive 50% of the net auction proceeds. All other rings not selected for the project will be auctioned individually and the maker will receive 50% of the proceeds.

To view past ring projects hosted by ABANA, visit: <http://www.photoworks.com> and click on "my photoworks." Login as blacksmithblacksmith@hotmail.com and enter password: anvil. After you login, click on "My albums" or the "Choose album" box. Photos are in folders titled: Ring Project "Ring of Fire" and BAM Conference Ring Project.

Grateful acknowledgment is made to the ring framework design and construction team: Bill Krawczeski, Charlie Bateman, Myron Hanson, Marty Hicks, Nick Hinen, Tom Latane, Rob Murray, Chris Rand, Ann Schroeder, Bob Walsh, Anna Yust, and John Yust.

Buy, Sell, Trade

Individual Classified ads

Books for Sale:

In December 2006, I stopped publishing Blacksmith's Gazette. Now, I've decided to start getting rid of my many books on blacksmithing. I've set up a page on my More Woodturning web site to list the blacksmithing books. That page can be reached at the following URL:

<http://www.morewoodturning.net/Blacksmithing-Books.htm>

Fred Holder

Commercial / Resource ads

Services:

Beverly Shear Blades Sharpened. Remove blades from shear and ship to Clay Spencer, 73 Penniston Private Drive, Somerville, AL 35670 . \$35 plus postage, additional cost for deep notches or blades previously sharpened at angle.

Custom spinning in copper, brass, pewter, and steel. Contact Ken & Kathy Markley, 7651 Cabin Creek Lane, Sparta, Ill. 62286. Phone: (618) 443-5284 Fax: (618) 443-5284

Little Giant-- We can do repairs on any or all components of your Little Giant front assembly. Contact H. "Sid" Suedmeier 420 4th Corso, Nebraska City, NE. 68410 (402) 873-6603

Roller Blade Treadle Hammers (Clay Spencer design) for Sale or Workshops led to build hammers. Bob Alexander, e-mail to scruboak4@netzero.com, or call 636-586-5350.

Information / Education

Ozark School of Blacksmithing - Tom Clark
Tom: tomclark@centurytel.net
School: www.ozarkschool.com
(573) 438-4725 Cell-(573)-747-8648

Tong Making Class-Weekend Course 4 people per class - \$125 per person Contact: Charles Comstock Rt.1 Box 20, Deerfield, MO. 64741 (417) 927-3499

The Upper Midwest Blacksmiths Assoc (UMBA) **video library.** An index list can be viewed at www.umbasonline.org They are VHS or DVD-R Cost is \$5 each with \$2 per order shipping There is no return date, you keep the video for this price. All videos are made at group demos, no commercial titles.

Classes offered, The Ornamental Iron Shop
Contact the instructor to register and customize your class.
John D. Thompson – Metalsmith
3923 Hwy 25; Hodges, SC 29653 864-374-3933

Classes at Pieh Tool Company, Inc. - Camp Verde, AZ
The Bill Pieh Resource for Metalwork.
Call now for more information and to enroll:
(928) 554-0700 or (888) 743-4866. www.piehtoolco.com.

Subscribe to Jerry Hoffmann's **Blacksmith's Journal**, a monthly publication for blacksmiths. Call 1-800-944-6134 for more information.

Blacksmithing E-books on CD

Now eight titles are available on CD, \$4/each, or all eight books, \$24 postpaid. More books are in production and will be available soon- order on-line at www.blacksmithingebooks.com, or check/MO to Brian Gilbert, 3404 Hartford Dr., Chattanooga, TN 37415.

Ray Clontz Tire Hammer Plans by Clay Spencer

Price is \$30US including postage to US and Canada, \$32US to other countries. Send check or money order 73 Penniston Private Drive, Somerville, AL 35670, Also, lead workshops for chapters or groups to build 15 to 20 hammers. phone 256 498-1498, cell is 256 558 3658, email is clay@tirehammer.com

New England School of Metalwork

www.newenglandschoolofmetalwork.com
1-888-753-7502

Blacksmithing classes, Arrowhead Forge, Buffalo, Wyoming.
David W. Osmundsen 47 N. Lobban, Buffalo, WY. 82834
www.arrowhead-forge.com

Products

Heavy duty **Frying Pan Blanks:** Steel, approximately 9 inch in diameter with 2 inch sides. 12 gauge (2.5 lb.) or 14 gauge (1.75 lb.) thickness. Contact: Bob Tuftee, 3855 Aspen Hills Dr., Bettendorf, IA 52722; bobforge@hotmail.com; (563) 332-4800.

The **Ozark School of Blacksmithing** still has tongs for sale. We are also importing the Sayha air hammer from Turkey. For more info on the tools contact Bob Alexander at 636-586-5350 or order through the school web site: www.ozarkschool.com

"L Brand"® ForgeCoke® now packaged in 50 LB bags. E-mail your zip code and amount wanted to: _LBrandForgeCoke@aol.com (mailto:LBrandForgeCoke@aol.com) for a delivered price quote. 1-678-360-3521. We take MasterCard & VISA. Updated 08/04/08.

Kayne and Son Custom Hardware, 100 Daniel Ridge Road, Candler, NC 28715. (828) 667-8868 fax (828) 665-8303, e-mail: kaynehdwe@charter.net, web site: www.blacksmithsdepot.com. Offering a full line of blacksmithing equipment. We ship and accept Visa and Mastercard.

Buy, Sell, Trade, Continued

D.L. Schwartz Co. **Blacksmith and Farrier supplies.**
2188 S. US 27, Berne, In. 46711, 1-800-955-3064

Persimmon Forge **PEDAL HAMMER** sit down treadle hammers for sale. Contact Dave or Betty Edwards by e-mail at djedwards@cableone.net, or write us at 3008 Hacienda Ct., Emporia, Ks., 66801, or call us at (620) 343-1947. For more information, go to www.persimmonforge.com and click on both "Pedal Hammer" and "Video Demo of Pedal Hammer."

SOFA fire pots are once again available. For information contact Bob Cruishank, 1495 W. Possum Rd., Springfield, OH. 45506 Phone: (937) 323-1300 or www.creativeironforge.com or www.sofablacksmiths.com

Chile Forge- Next generation **gas forges**
www.chileforge.com David Starr 520/360-2141

USA Dealer for **REFFLINGHAUS ANVILS**, 77 to 1250 lb. European 2 horn with or without upsetting block & side shelf. Over 100 sizes and styles available. Guaranteed face @ HRC59 Dick Nietfeld www.blksmith.com Phone (308) 384 1088

Ray Clontz style tire hammers for sale: \$2200 unpainted, \$2500 Painted. John Wayne Taylor, Wetumpka, Al (334)-514-2254 home, or (334)-399-0032 Cell.

Wanted:

Help Wanted: The 2010 conference plan has begun. I need input on demonstrators, if you have any suggestions or would like to volunteer, feel free to e-mail me at acornridge3@yahoo.com Thank You, Joe Hurley (conference chairman)

Demonstrator List

Fred Weisenborn has started a list of members available for demonstrations, fairs, historic events, and festivals, etc.
417-589-2497 e-mail: jweisenb@llion.org

Around the Anvil BAM has it's very own E-Mail news group. If you would like to participate send an E-Mail to Ed Harper at aramed@grm.net and he will get you signed up.



SEPTEMBER-OCTOBER 2009

ConferenceUpdate:

First off, the 2010 conference logo & t-shirt design contest winner will receive a hat & t-shirt. Winners will be voted on by conference committee, Send entries to Joe Hurley RR1 box 50 Downing, Mo. 63536 deadline for entry is Dec 31st 2009.

Second, BAM conference project this year is a garden arbor to be decorated with fruits,vegetable's,leaves , vines,etc..accual life size items, there will be 2 hammer-ins at Ken Jansen's for this project(dates to be announced) or bring items to conference. The arbor will be auctioned off

Also, it is never too early to start making items for auction & boutique.

Thank You,
Joe Hurley



Rest of trade items



Bob Evans with a 42" I beam that he formed.

At the September meeting Richard Stubblefield gave me this label to share. He said that it isn't as strong as muriatic acid, but it works and it is safe.

bamsite.org

17

Need Coal ?

Check on Availability

Coal Captain: Bob Alexander



1. Bob Alexander (636) 586-6938
14009 Hardin Rd,
DeSoto, MO. 63020

2. Ken Jansen, (636) 366-4353
2257 Charter Rd.,
Moscow Mill, MO. 63362

3. Doug Clemons, (660) 595-2257
RR1 Box 124,
Malta Bend, MO. 65339

4. Jerry Rehagen, (573) 744-5454
390 Bozina Valley Trail,
Freeburg, MO. 65035

5. Jeff Willard, (417) 742-2572
P.O. Box 416,
Willard, MO. 65781

6. Denis Yates, (573) 286-5316
343 Lamp Dr.
Sunrise Beach, MO. 65079

7. Joe Hurley (660) 626-7824
Rt1 Box 50
Downing, MO. 63536

9 Paul Lankford, 573-473-7082
25849 Audrain Co. Road 820,
Mexico, MO 65265

Price \$17.00 per bag BAM members, \$18.00 per bag Non-members, \$14.00 per bag at Bob Alexander's
Coal keepers earn \$4.00 a bag

A. Non BAM coal. \$25.00 per 50#s. The coal is located in Camden Point, Mo. I can be reached at 816-992-3352
Thanks, Vernon Adkins, adkinsfarms@gmail.com

B. Non BAM coal \$.40/lb check \$.35/lb cash, bring your own containers. Tim Johnson Springfield, MO 417-886-8032.

Upcoming Events

November 7 - BAM meeting Bob Evans Liberty, MO 816.781.5717 Trade Item - bank line fishing pole holder
November 14 - Newsletter Submission Deadline
 November 21-22 Frank Turley demo at Lou Muler's shop Sunset Hills.
 November 27 Hammer-in Ken Jansen's shop Moscow mills. 636-295-5844
 January 1 - Application deadline for February Scholarship awards.
 January 16, 2010 - BAM meeting, Don Nichols and Kent Harbit Sedalia, MO
 February 20, 2010 MTS Workshop Number one. Ray Scott, Eminence, MO. Telephone 573-226-5541 evenings only
 February 27, 2010 MTS Workshop Number two. Ray Scott, Eminence, MO.
 March 13, 2010 MTS Workshop number 3 (Making Tongs) Ray Scott, Eminence, MO.
 March 27, 2010- BAM meeting, Boy Scout Camp
 April 1 - Application deadline for May Scholarship awards
 April 28 - May - 2 **BAM Ozark conference**, Sedalia, MO contact Joe Hurley at acornridge3@yahoo.com
 May 2010 - BAM meeting Ham's Prairie, MO Ned Digh (573)-642-9502
 June 13 - July 10 2010 - Boy Scout Camp, Metal working merit badge classes
 July 1 - Application deadline for August Scholarship awards.
 July 10 2010- BAM Meeting Bob Ehrenberger, Shelbyville, MO. (573)-633-2010 Trade Item: Forged Chain
 August 2010 - Missouri State Fair Sedalia, MO contact Kent Harbit (660)-647-2349 to volunteer
 October 1 - Application deadline for November Scholarship awards.
 September 2010 - BAM meeting, OPEN
 November 2010 - BAM meeting, OPEN

MTS WORKSHOP

BASIC BLACKSMITH TRAINING

Location: Ray Scott
 HCR 2 Box 196, Eminence, MO. 65466
 Telephone 573-226-5541 (evenings only, no day time number)
 From the intersection of Highway 19 and Highway 106 in Eminence, Mo. Go east on Highway 106 to Highway V. Go North on V two miles. On right side of highway is a white wooden fence turn into drive way.

February 20, 2010 Workshop Number one.
February 27, 2010 Workshop Number two.
March 13, 2010 Workshop number 3 (Making Tongs)

Must be a BAM Member to take the workshops.

Send registration and payment for workshops to:
 Ray Scott at above address.

For information on workshop send enquires to:
 Don Birdsall 573-364-7223
 Email donbirdsall@embarqmail.com

Workshops start at 8 am and end at 5 pm. Please be there by 7:30 am. Bring lunch and drinks.

Safety glasses (To be provided by students) must be worn at all times while work is going on.

Aprons and gloves optional (must be provided by students).

Cameras and tape recorders are allowed (Encouraged).

New Members

If you have a new member near you, welcome him to the group and show him the ropes.

Barnhart, Roy POB 298 Colcord, OK 74338 918-326-4322	Callies, Ron 4564 Fox Creek Road Wildwood, MO 63069 rodcallies@mac.com 314-330-2647	Enix, Mel 419 NW 1401 Holden, MO 64040 816-850-6391	Sappington, Charles 11308 W. Farm Road 4 Walnut Grove, MO 65770 417-788-2722	Whitmore, Dan 26758 Ingel Road Brookfield, MO 64628 660-258-8259
Bishop, Steve 320 S Buckner-Tarsney Rd Buckner, MO 64016 stevebishop@live.com 816-650-3588	Clifford, Mark 3911 Hwy K Bonne Terre, MO 63628 273-431-8484	Lackman, Aaron 11683 County Road 385 Holts Summit, MO 65043 alackman@embarqmail.com 573-645-0635	Scheel, Leland 3831 Hwy EE Owensville, MO 65066 hotfoot@fidnet.Com 573-437-3927	

BAM

2212 Aileswick Dr.,
St. Louis, MO 63129

Please send changes to Bruce Herzog, 2212 Aileswick Dr., St. Louis, MO 63129 or e-mail to bjherzog@msn.com

Next Meeting: November 7 Liberty, MO



Location:

Shaped Steel, INC.
3000 E. Heartland Drive

Host: Bob Evans

Trade Item:

Bank Fishing pole holder

Food: lunch will be provided, please call to confirm attendance so that we may get an accurate count for lunch. thanks!

*** There will be an opportunity to buy steel remnants.

Phone: 816-781-5717

Directions:

From: I-70 East & West
take HWY 291 North to Liberty, MO.,
Stay on HWY 291 TO I-35 Junction,
Take I-35 North to exit 20 HWY 69 North (next exit), go straight on 69 HWY,
at next stop light take right Heartland drive,
at stop sign take left,
we are second building on right

From: North
I-35 south to exit #20
take left at bottom of ramp
next light take left onto hwy 69 north
next light take right on heartland drive
left at stop sign
second building on the right