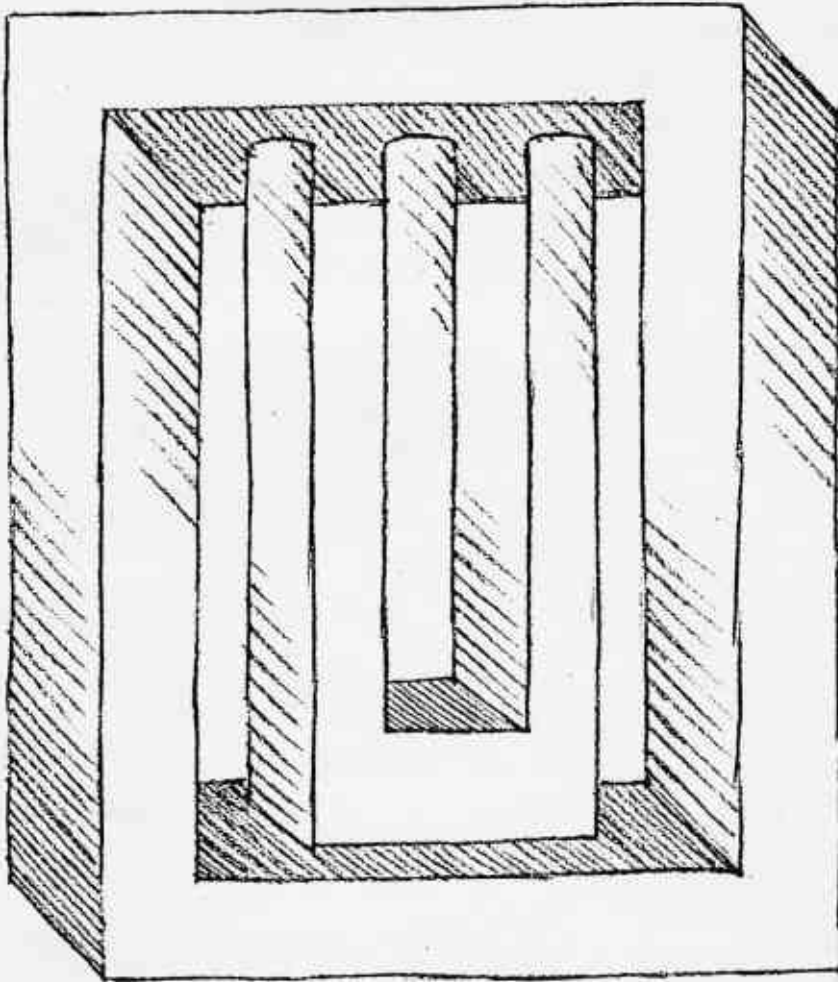


Newsletter ^{of}
the
Blacksmiths
Association
of Missouri



February - March 1989
vol.6 no.1

The Blacksmiths' Association of Missouri is a chapter of The Artist-Blacksmiths' Association of North America. This organization is devoted to preservation, advancement, and communication between blacksmiths of Missouri and surrounding areas. BAM's newsletter's goal is to support these ideas. Letters to the editor, tech tips, tools for sale, or any ideas which further these ends will be considered for publication.

Occasionally some material included in this publication will be copyrighted and may not be reproduced without written consent of the author. BAM welcomes the use of any other material printed in this newsletter provided the author and this organization be given credit.

OFFICERS

President &
Assistant Editor
Bernie Tappel
Rt. 1 Box 81
Henley, MO 65040
(314) 496-3793

Vice-President
Dan Whitmore
9741 Lanier
St. Louis, MO 63136
(314) 869-9992

Secretary-Treasurer
Steve Austin
44 N.E. Munger Road
Claycomo, MO 64119
(816) 781-1512

Editor
Doug Hendrickson
R.R. 1 Box 16 D
Lesterville, MO
63654
(314) 637-2576

Art Director
Jerry Hoffmann
Rt. 1 Box 189
Lonedell MO 63060
(314) 629-4061

BAM MEMBERSHIP APPLICATION

Name: _____:

Address: _____:

City: _____:

State: _____ Zip: _____:

Telephone: _____:

New Member: _____: Renewal: _____:

Dues are \$15.00 per year, which includes a subscription to the bimonthly BAM newsletter. Please make checks payable to Blacksmith Association of Missouri.

SEND CHECKS TO: Steve Austin
44 N.E. Munger Road
Claycomo, MO 64119

MEMBERSHIP RENEWALS

Be sure to check the date on the label of your newsletter. This is your membership renewal date. We will include a renewal reminder in your copy of the newsletter when your membership is due to expire. If the date on your newsletter label is not correct, please notify Bernie Tappel as soon as possible.

PARTICIPATE

Several times a year, usually when I'm having a hard time coming up with enough material for the newsletter, I make this plea. This is your newsletter, send me articles, tips, want ads, book reviews, drawing and photographs (high contrast black and white) or anything else you would like to share with our membership. Your editor should not have to fill in so many blanks with his droll prose. Get involved.



TREASURER REPORT

Treasurer Steve Austin reports the BAM account is up to \$2600. Remember this money is ours to use to advance the goals of this organization. If you have any ideas drop our President a line. A year ago we were scratching and scrambling to cover the Turley Workshop. Increased membership, and faithful renewals, and a generous gift have put us safely in the black.



RINGS PROJECT REPORT

The ten inch rings are slowly coming in. We now have about 10 or 11. We need 18 to finish the project. So beat yours out and send it to Vernon Fischer, Box 756, Rocky Mount, Mo. 65072 or bring it to the next BAM meeting.

IDEAS FOR NEXT TWO DAY WORKSHOP?

As you all know BAM sponsors an annual 2 day workshop with a well known smith. It's time to start thinking of 1990. Please contact Bernie with ideas and recommendations. Colin Campbell has been talking about trying to get Peter Ross, Blacksmith at Williamsburg, for 1990. What do you think? Input - Input - Input!

Next Meeting

MARCH 18 - 19
BAMS GREATEST HITS
AT SIU-E

Our next meeting will be at SIU-E in Tom Gipe's sculpture studio. You will all receive a flyer with everything you need to know shortly.



MAY MEETING

The May Meeting will be at Don Asbees in Hartsburg on May 20th. A map and details will be included in the next newsletter.

January Meeting

JANUARY MEETING

The January meeting was held at Stan Winkler's new shop in Ste. Genevieve, with everyone arriving between 8:30 and 9:30 A.M. It was a great turnout with around 40 smiths making an appearance. There were many new faces in the crowd. There was a low rumble across the shop until the business meeting was called to order.

At 11:30 the Business Meeting adjourned and we all crossed the street from Stan's shop to the Southern Hotel, a local "bed and breakfast" and checked out the sights. The Southern Hotel purchased our circle screen project. The screen has been incorporated into a headboard by Stanley and is now displayed for overnight guests.

We left the bed and breakfast for a leisurely lunch at the Anvil Restaurant - good food and great conversation.

Back at Stan's, Jerry Hoffmann was asked to demonstrate forge welding techniques.

To everyone's amusement, Steve Baker brought his VCR film showing the antics from last month's meeting.

Stanley Winkler gave a demo on sharpening plowshares. (Thanks Stan.)

Various smiths played in Stan's forge and with the trip hammer. In general we all had a great time.

BUSINESS MEETING REPORT

The first order of business was the BAM skillet and throwing shoe raffle. The skillet went to Jim McCarty and the shoes to Joe Kilo.

Final plans for the "Greatest Hits" gathering were made. Steve Baker volunteered to make video tapes of the workshop. You will receive a separate flyer with the details of the "Greatest Hits" workshop.

It was suggested that we should try to get Peter Ross for our major workshop in 1990.

We still need more circles for the metal museum screen. If you need more information on this project, check past newsletters or call Doug Hendrickson at (314)637-2576.

Steve Austin reported that we presently have \$2669 in the treasury.



Steve Austin, BAM'S treasurer giving his report to the members at our Jan. meeting.



The grubby little smith and his BIG hammer?

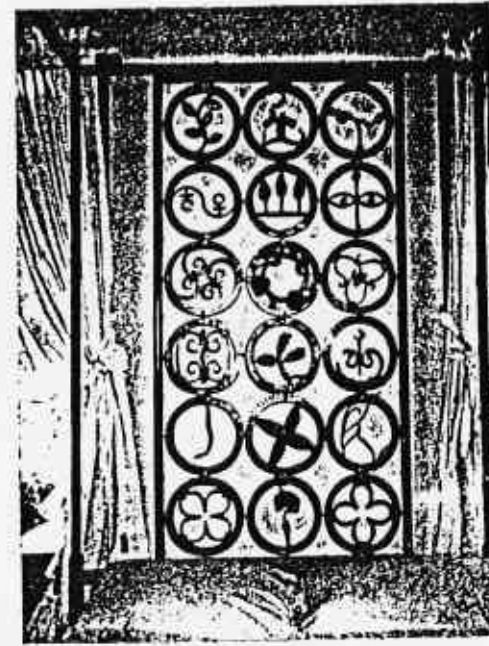


Stan Winkler's new forge based on plans published in the Anvils Ring.

THE LADIES VERSION OF THE BAM MEETING

by Patti Tappel

Well, fellow smith wives, you missed another good one. There was just myself and one other friend, Eunice Fischer, who showed up with our husbands at the meeting in Ste. Genevieve. It is a grand old town to tour. Established in the early 1700's by the French it is full of gorgeous timberframe and/or log homes, museums, a fort, the Church of Ste. Genevieve built in 1759, many Bed & Breakfast Inns and lots of antique shops. We walked from Stan's shop and found more than we could possibly see in the one day stay. We quickly darted in and out of shops, looking over their wares and making note of what we liked,



This is how our last group project turned out. Stan sold it to a Bed & Breakfast in Ste. Genevieve, they in turn hired Stan to build a 4 poster canopy bed with the project as a headboard. Pretty neat, huh?

in case we needed to make a return trip with the car. (Which did come about after we found a shop that was going out of business at give away prices!)

At noon we stopped in at the Anvil Restaurant and Bar for lunch with the men folks. After a rather long wait for our food it was back to the quiet town for more bargains. The day was really going fast and it was soon time to return to Stan's to pick up our husbands and see if they would fit into our cars with the days purchases.

If you missed this meeting in Ste. Gen. you really missed seeing a bit of history. Perhaps you could join us there the next time Stan is host. Thanks Stanley, you live in a beautiful town.



Safety

by Walt Hull

Dear Professor Safety,

A lot of people wear steel-toed shoes when they work but a guy I know says that the steel toe might be crushed by a falling weight and cut into my foot. What do you think?

Piggy

Dear Piggy,

I once heard something as dumb as that, but I can't remember just now what it was. Let me share with you an experiment I performed. I was retiring a worn out pair of steel-toes and I decided to see what they'd been doing for me. I laid one on the anvil and struck the toe as hard as I could with a 2# hammer. This had no effect, so I tried a 4# hammer. This did no more, so I took the 6# to it. When I still hadn't moved the steel toe, I asked Mitch to try it with the sledge.

Mitch, for those who don't know him, is, at 6' 4" and 250 lbs., a big kid, and he was able to dent the steel toe cap a little. If the guy you know would like to bring his tennis-shod foot around and set it on my anvil we could try it again.

I quit wearing tenny-runners around the shop for a differnt reason. They are absolutely transparent to hot stuff, and I do a certain amount of arc welding and torch cutting. I find it very difficult to run a really smooth bead or make a clean cut with a hot BB in between my toes.

Prof.

Safety

Dear Prof.

Of all the things in your shop, which have you hurt yourself with most often?

Curious

Dear Curious.

Hammers and hot iron. Not surprising, as these are the things I use the most. The bottom line is, any system with enough available energy to change the future of a piece of steel will do the same for you.

Please send your safety questions, concerns, tips, or corrections to Walt Hull, 2043 Mass., Lawrence, KS 66046. Neither the author, the newsletter, or the Blacksmith,s Association of Missouri pretends to be exhaustive or infallible. It's your shop and your safety, and you are responsible for them. We only hope to help by increasing awareness of hazards and steps to avoid them.

ABANA

Artist-Blacksmiths' Association of North America



PRESIDENT'S MESSAGE TO THE CHAPTERS
FEBRUARY 1989

Another year behind us and full steam ahead into the next! The 1990 Conference will be held at Alfred State University conference site (about 75 miles west of Elmira, New York). The ABANA board will participate heavily in this conference and all future ABANA international conferences as never before in order to put together an international conference that speaks of the greatest blacksmith organization in the world. We of the board need to set standards with guidelines and participate in the work.

1990 Conference Committee Chairman is Michael Bondi (ABANA 1st Vice President) and the conference committee co-chairmen are Charlie Orlando and Steve Joslyn from the New York Designer Blacksmiths Association - Chapter of ABANA (NYDBA). Orlando and Joslyn have already had two very productive planning committee meetings and we intend to give them all of the help and support that the board can. Any suggestions concerning demonstrations or educational topics that you wish to see at the 1990 Conference would be greatly appreciated. Please send all materials to Michael Bondi, 1818 Shorey Street, Oakland, California 94607. Michael Bondi will organize all of this information and pass it directly on to Orlando and Joslyn. To organize and successfully run a conference of the size of the 1990 event will take some serious legwork. So far we have the drive and the manpower to make this the very best conference yet.

It isn't too early to be thinking of the 1989 ABANA director elections. The continued success of ABANA will be contingent upon a hard working board. Please contact Janelle Gilbert at the ABANA Office for details if you are not already familiar with the procedures. We will be running an ad in the Anvil's Ring to alert you to the coming election, however there are only two quarterly magazines yet to come out before the election.

The voting on the bylaw clarifications will be coming out with the ballot for the 1989 election this summer. This joint mailing will save ABANA several hundred dollars and every penny helps.

I encourage you to contact Ward Brinegar, 1709 West Charles Street, Grand Island, Nebraska 68803. Ward is your new ABANA Chapter Liaison and has a very fine committee set up with goals to assist all of us in a better working relationship. Please refer once again to your November memo (mailed in a January mailing) for specifics concerning his committee. I really hope that you will take advantage of this ABANA committee which was set up specifically with the chapters in mind.

My very best to all of you.

Dorothy Stieglar
Dorothy Stieglar
ABANA President

DES/jcg

ABANA

Artist-Blacksmiths' Association of North America



M E M O

TO: ABANA Chapters
FROM: Bill Callaway, ABANA Treasurer
DATE: November 28, 1988

RE: LOCATING ATTORNEYS TO ASSIST WITH ABANA BUSINESS

The Artist-Blacksmiths' Association of North America is no longer a small organization with a few hundred members. Our association has grown with membership approaching 3,000. We must make every attempt to run ABANA in a professional manner. At our recent board of directors meeting it was decided that an attempt should be made to obtain the help of attorneys belonging to our association.

Problems ABANA may need assistance with could be varied and diverse, for example: 1) Tax and Accounting Advice, 2) Advice on Management of Restricted Funds, 3) Insurance Policy Review, etc.

In short, we need your help to form a network of lawyers to assist us in the event we may need advice.

To have a lawyer attend the ABANA board meeting in future years would be very desirable. A Phoenix, Arizona blacksmith attorney Mr. Reid Carlock has agreed to contact each interested lawyer and work out details of your specialty and how you may be able to assist ABANA. Please consider our request for assistance and let us know so we may put this program in service.

Please send a brief note expressing your interest and willingness to help addressed to:

Bill Callaway
3645 West Lawrence Lane
Phoenix, AZ 85051.

Thank you in advance.

BC/jg

ABANA

Artist-Blacksmiths' Association of North America



Dear ABANA Chapter Presidents,

At the November meeting of the board of directors of ABANA, I was appointed to serve as the chairman of the Chapter Liaison Committee. As I take this responsibility, I wish to recognize Joe Humble for the many years he held this position and the crucial role he served in the development of the entire chapter concept. Without his efforts this idea might never have gotten off the drawing board. Thanks, Joe!

I'm amazed at the diversity of the various chapters around the country. We have large chapters with their own meeting places and successful annual events of major significance. We have small chapters that get together whenever and wherever they can. The chapters serve a wide variety of needs, but perhaps the most vital is that they offer their members a chance to get together to share ideas and fellowship on a much more frequent basis than ABANA can provide. ABANA is the link that binds them all but it is not ABANA's function to serve as a governing body for the chapters. Rather, it is ABANA's role to help the chapters develop so they effectively serve their members and facilitate communication and cooperation among the chapters.

I personally hope to take an active part as a facilitator of this growth and sharing. It is my goal to help each chapter however I can to achieve its own goals and serve its members. I invite you to call on me for ideas to help improve your chapter, to communicate with the ABANA board and to spread information to other chapters. Another important aspect of this position is to assist new chapters in their formation and initial development. The board sees the chapters as a vital, integral part of ABANA and will do all it can to serve them. I'm the first link in the chain, so please call on me at any time. I can be reached at these numbers:

HOME: Ward Brinegar
1709 West Charles
Grand Island, NE 68803
(308) 381-7817

WORK: Stubr Museum
3133 West Highway 34
Grand Island, NE 68801
(308) 381-5316

I would like to ask that each chapter please send me copies of their newsletters to help me keep abreast of activities. Then I can share information with you through the chapter mailing. I can't afford to join every chapter*but I am certainly willing to pay postage if you wish. Thanks!

I look forward to working with you during my tenure as an ABANA board member and I hope I can make a positive contribution as the Chapter Liaison. I hope 1989 is a successful year for each of you personally and for your chapters. Again, please do feel free to call me at any time.

Sincerely yours,

Ward Brinegar
ABANA Chapter Liaison

WB/jg

Misc.

RURAL MISSOURI ARTICLE

The March issue of Rural Missouri will feature an article on BAM, written by BAM member Jim McCarty of Loose Creek. Jim is the editor of Rural Missouri. He also ran a feature story several years ago on Darold Rinedollar, a prominent Missouri smith.

Rural Missouri has a statewide circulation of around 330,000.

Registry of Blacksmiths Marks

Mike Shaffer, A blacksmith and dentist from Georgia has taken on an interesting project. Blacksmith's personal stamps are being collected by Mike with the idea of assembling a registry of these touch marks. I really don't know what form the registry will take but it sounds like something that ought to be done. Mike asks that we all send him a stamped piece of iron, a rubbing, or a drawing of your mark. I hope that when this ambitious project is completed that copies of his study will be made available to us all. Send your mark to: Mike Shaffer

1155 Daniel Court
Stone Mt., Georgia 30083
Phone (404)-469-2680

EXPRESSIVE DESIGN IN IRON:

A symposium at Penland School in Penland North Carolina.

In recent years blacksmithing has gone through a transformation. Ancient techniques are being applied to contemporary sculpture and fine arts concept. To advance this creative movement Penland will host a symposium in which a panel of educators and contemporary blacksmiths will address the subject of expressive design in iron.

The moderator for this symposium will be Philip Yenawine, Education Director for the Museum of Modern Art New York. Members of the panel are Tom Joyce, Brent Kington, Robert Owings, Albert Paley, David Peterson and William Harsley.

The dates are April 20-23, 1989.
Conference Fee \$65.00
Room and Board is available. For complete information and an application write -
Penland School

Penland, New York 28765

DIRTY HANDS ?

I don't know about you guys but occassionally my hands get a little grimy. Maurice Ellis, A BAMer from Florissant, Mo. recommends the following solution to this pesky little inconvenience.

A heavy duty hand soap that I have found to be extremely good can be purchased in Bonne Terre, Mo. It is called Pum-X Lotion Soap with Pumice Scrubbers, It can be purchased from Pum-X Products, Inc. P. O. Box 150, Bonne Terre, Mo. Their phone number is 314-358-5580 or 1-800-537-1418 from anywhere except Missouri. It costs \$9.00 per gallon. A pump dispenser that fits on the gallon container costs \$1.75.

MISSOURI CULTURAL HERITAGE CENTER BROCHURE

The Missouri Cultural Heritage Center has printed a brochure entitled "Blacksmithing: Utility and Artistry."

This eight page brochure discusses both the practical and artistic aspects of the blacksmith's craft and features several photos from the previously mentioned Rural Missouri article on Darold Rinedollar.

If you would like a copy of this brochure, contact:

Pat Janson
Traditional Arts Apprenticeship Program
University of Missouri-Columbia
Missouri Cultural Heritage Center
Conley House
Conley & Sanford Sts.
Columbia, Missouri 65211
Telephone (314)882-6296

You may have to use a large manilla envelope just to fit that address on!

BOOK REPORT

The Appalachian Blacksmith's Association is proud to offer the 1909 Champion Blower and Forge Company Catalogue-Collector's Edition Reproduction. This rare and excellent catalogue is 8 3/4" X 11" and 36 pages with a plastic spine. Included are blowers, forges, firepots, post drills, upsetting and welding machines, tire and axle shrinkers and more. To get your copy send \$6.50 (postage paid) to:

Bob Wagner, Secretary
Appalachian Blacksmith's Association
Rt. 1 Box 9A
Old Friends, WV. 26845

COAL

Feeders Warehouse Supply in Jackson, Missouri is once again selling quality blacksmithing coal. Several members have recommended it.

Collinsville Ice and Fuel in Collinsville, Illinois is selling Blacksmith Coal at 40# for \$3.50. This coal has also been recommended by several St. Louis smiths.

Your editor has not personally checked this information.

The Missouri Department of Natural Resources is updating the resource file for planning arts-and-crafts shows in Missouri state parks and historic sites. If you would like to be included on the resources list, please fill out the following information: (PLEASE PRINT)

_____ (____) _____
 Name Telephone

_____ Address City State Zip Code

Types of craft(s) _____

Demonstrations performed at shows: _____Yes _____No

Please include pictures, business cards, and any additional information and mail to:
Missouri Department of Natural Resources
Division of Parks, Recreation, and Historic Preservation
P.O. Box 176
Jefferson City, MO 65102
ATTENTION: David Kelly

JOHN ASHCROFT
Governor

FREDERICK A. BRUNNER
Director



STATE OF MISSOURI
DEPARTMENT OF NATURAL RESOURCES
DIVISION OF PARKS, RECREATION, AND HISTORIC PRESERVATION

Division of Energy
Division of Environmental Quality
Division of Geology and Land Survey
Division of Management Services
Division of Parks, Recreation, and Historic Preservation

John Cunning, Site Admin.
Mark Twain Birthplace SHS
Stoutsville, MO 65283
28 December, 1988

Dear Exhibitors and Food Vendors,

It is once again time to begin planning for the Annual Salt River Folklife Festival. The evaluation meetings for the 1988 Festival have been held and plans are being finalized for the 1989 Festival. Thanks to all of you, Festival '88 was the best so far. The planning committee is working very hard to make Festival '89 just as good; maybe even a little better.

The dates for the 1989 festival will be Saturday and Sunday August 12 & 13, 1989; the second Saturday and Sunday in August. Because everyone has been so positive about the way the festival has been organized in past years we do not plan any major changes for 1989. Terms and agreements of participation will remain the same, as will the application forms. Application packets will be mailed out some time in late February. The festival will again be held in Florida, Missouri and will be co-sponsored by the Missouri Department of Natural Resources, the U.S. Army Corps of Engineers, and the Friends of Florida

The members of the planning committee, made up of representatives from all three co-sponsoring agencies, would like to thank all of you for helping to make the Salt River Folklife Festival one of the most successful and popular festivals in northeast Missouri. We look forward to seeing all of you in August.

Sincerely,
Mark Twain Birthplace State Historic Site

John Cunning
John Cunning
Historic Site Administrator

bethel

German Colony

P.O. Box 127, Bethel, MO 63434
Ph. 816-284-6493



News Release
For Immediate Release

Contact: Jeanne Adams
816/284-6493

BETHEL -- "Intense, enriching, fulfilling, unpretentious and serene," is how director Jeanne Adams describes the new Bethel Colony School of the Arts. Registration for the week-long classes are now in progress and according to Adams going very well.

The Bethel Colony School is offering a broad range of courses encompassing the folk arts and fine arts in both the visual and performing disciplines. Classes such as, printmaking, ceramics, blacksmithing, watercolor, parlor piano, American finger-style guitar, natural dying, bookmaking, papermaking, and weaving, will be held during the months of May, June, July, and September. There will be some weekend workshops.

The school is located in the tiny rural town of Bethel, MO, population 132. Bethel, listed on the National Register of Historic sites, was founded in 1844 as a religious communal society.

Since its founding Bethel has been home to many talented artists and artisans. "Our activities and events have a reputation for quality," said Adams and added, "That reputation and the ambience of this lovely small town provide an ideal setting for the school."

To order a free catalog write: Bethel Colony School of the Arts, POB 127, Bethel, MO 63434; 816/284-6493. Bethel is located one hour west of Hannibal, MO on Hwy 15, North.

-HBGC-



National Ornamental Metal Museum

Dear Fellow Smith,

Enclosed is a copy of the packet of information prepared by Dick Quinnell for the "Great Gates" project. I realize there will be some of us Norte Americanos who will find it difficult to locate 8mm studs at Tony's Hardware and Used Auto Parts, so we have laid in a supply and can send them to you upon request.

As for shipping, Federal Express Corporation has generously agreed to underwrite all shipments of scrolls from U.S. and Canadian smiths. Enclosed is a pre-addressed, pre-paid shipping label. Simply box or wrap your scroll and call your local Federal Express agent, who will come over to your place and pick it up. Should some of your dearest friends also decide to execute pieces, you may ship up to 70 pounds in one container. Additional shipping labels are available if you need them.

Please ship between February 1 and April 28. Federal Express will only honor the labels during that period. To insure proper planning, we need to have all the components here by April 30.

I look forward to your participation in this international project. With the assistance of the world-wide fraternity of blacksmiths, the Metal Museum will finally, after ten years, boast a truly proper pair of gates. Thanks.

Sincerely,

Jim Wallace
Director

BOARD OF TRUSTEES

F. Jack Hurley
President
William R. Leonard
Vice-President
George Keeler
Treasurer
Ken Aggroves
Secretary

David Britain
Alan E. Glenn
March Hall
Scott Howell
L. Brent Kingston
Stanley D. Linder
Joanne Markell
Jim Netuk
Sam Pared
Mack B. Parker, Jr.
Dana Pleasant
Frank Rathe
Marcus Roumice
Ernest Wiermann
Bill Wierfeld
Leon York

William Gasparini
Trustee Emeritus

James A. Wallace
Director



Master Craftsmen in Iron

Richard Quinnell Ltd

Architectural Metalworkers
Wrought Ironworkers, Blacksmiths

Rawhurst Forge, Oxshott Road, Leatherhead, Surrey
Tel: (0572) 375148 Telex: 923492 KT22 OEN
Fax: (0372) 386516

December 1988

The 10th Anniversary Gates for the National Ornamental Metal Museum, Memphis, Tennessee, U.S.A. - an International Project

Here are the working details for the forged scroll unit that you and other smiths from around the world will be contributing to 'The Great Gates'.

I have chosen a classical Renaissance style for the gates, with a repeating design of identical 'S' scrolls, to enable smiths with widely differing personal styles, living thousands of miles apart, to each forge a piece that will fit perfectly into the whole. For this, uniformity is essential, but in order to let each smith express the individuality of his or her imagination, each scroll will be fitted with two, different, motifs, fixed to the scroll eyes.

These motifs can be of any form, entirely according to the whim and imagination of the maker. They should be of metal, and I suggest between 2 1/2" (55mm) and 3" (80mm) in diameter (although not necessarily circular) and not project too far from the face of the gate - perhaps 2" (50mm) maximum. Each motif must have a threaded steel rod metric 8 mm diameter (M8) securely tapped and brazed or welded to the back of the motif long enough to screw right through the scroll eye and project a further 5/8" (16 mm) behind it (41 mm total) - we will fit a ball nut and rivet the end over when assembling, to prevent removal of the motifs by souvenir hunters. Please punch your name and/or personal maker's mark on the flat of the scroll at the middle, and also on the back of your motifs so that we can match them up. Please send without paint or primer. The scrolls should be made in mild steel or wrought iron. The gates will be painted in the USA. If your motifs require a special finish (or are not to be painted) please advise.

192 scrolls will be selected at random to go into the gates; those left over will go into the new railings on the wall at either side, or into a new screen in the museum building. ALL participants will be acknowledged and named in all press releases, and their contribution recorded in a permanent display in the Museum. In addition, every contributing smith will receive a presentation copy of the limited edition engraving of the gate design which is being prepared under the auspices of the American Institute of Architects, Memphis Chapter.

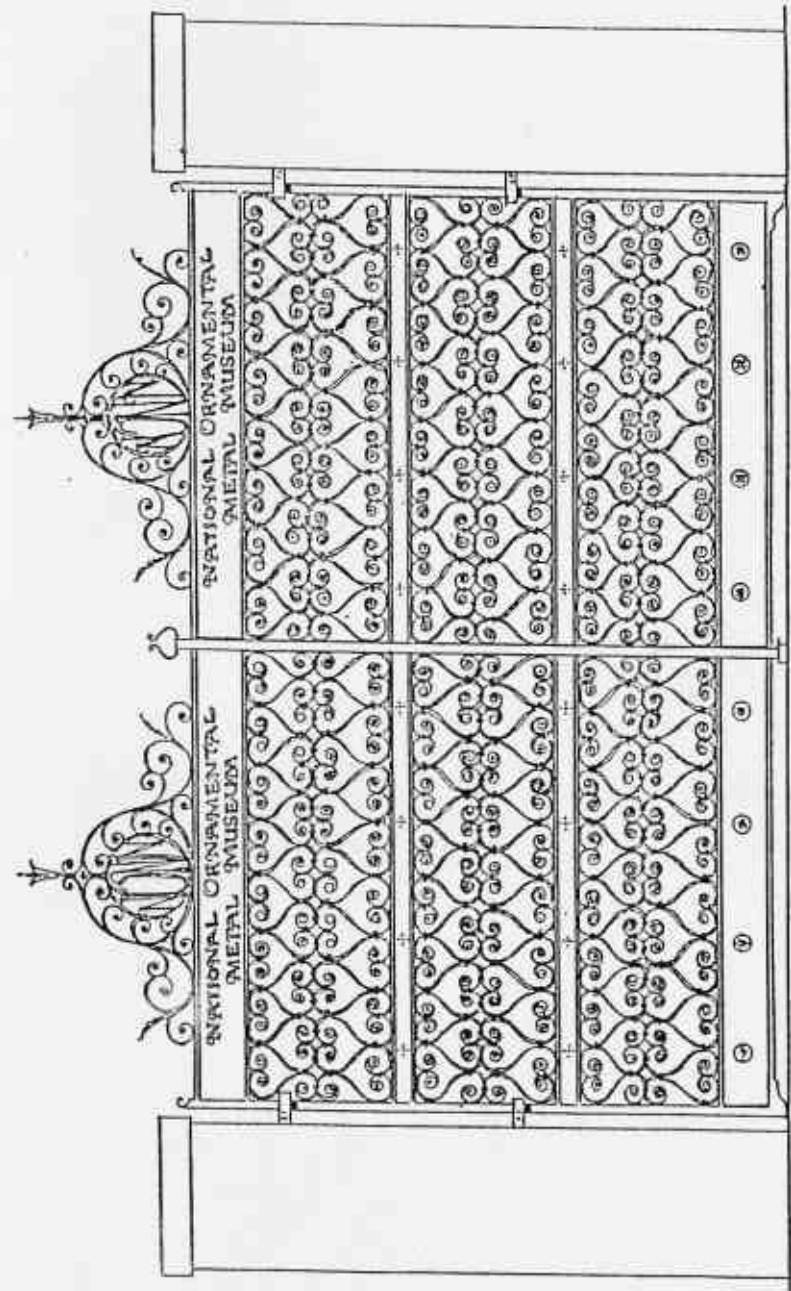
You will be most welcome to come to Memphis to take part in the assembly and installation of the gates between 6th May and 13th May (between the Hot Rod Nationals and the World Championship Barbecue Contest!)

Please send me your scroll and motifs as soon as you can, but in any event to reach me no later than 23rd March (Easter) to allow time for freighting to Memphis.

Have fun!

Yours sincerely,

Richard Quinnell



© COPYRIGHT: RICHARD QUINNELL / N.O.M.M. 1988

WANTED

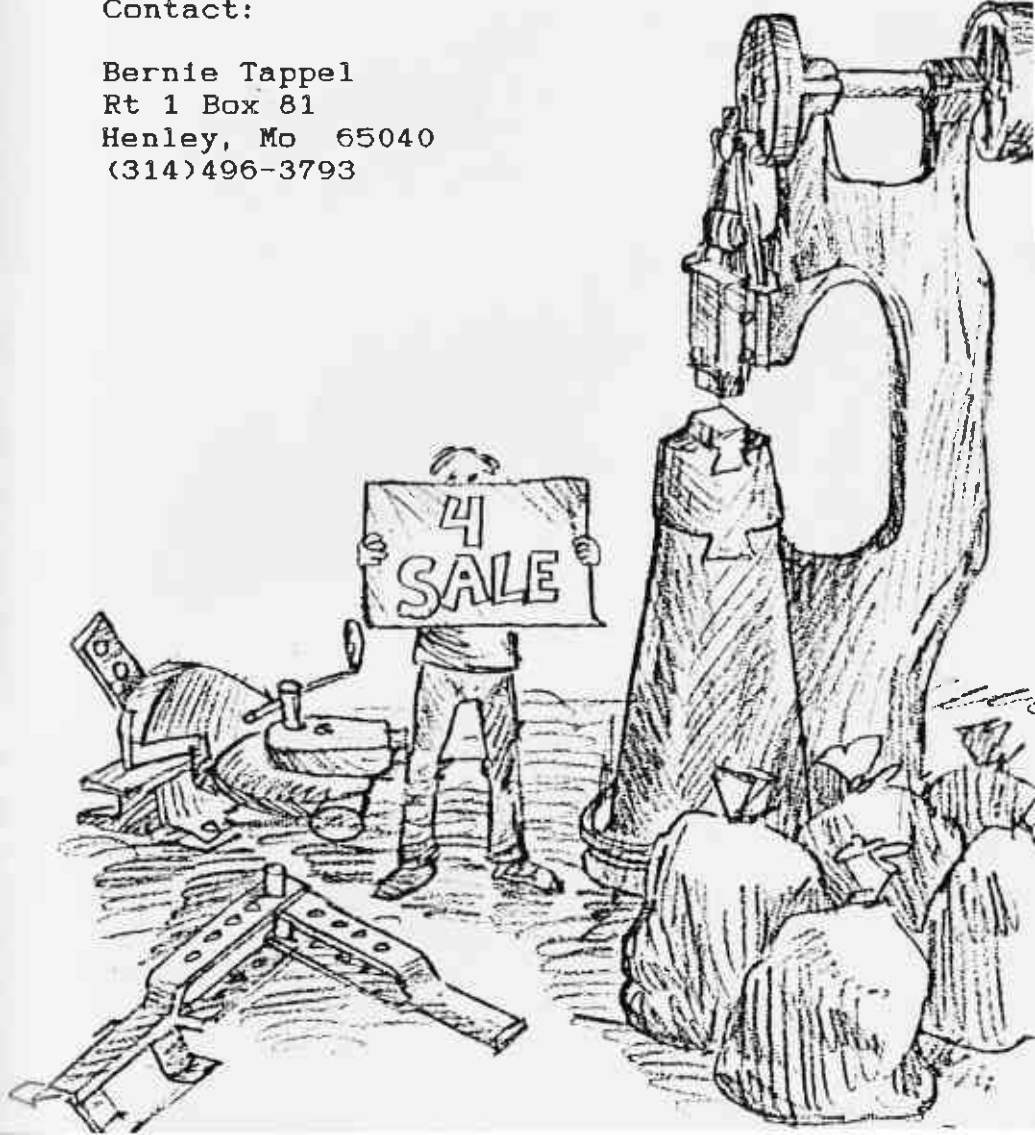
An Anvil between 115# and 160#. Please contact:

Bob Lemmon
Rt. 3 Box 3686
Farmington, Mo. 63640

FOR SALE

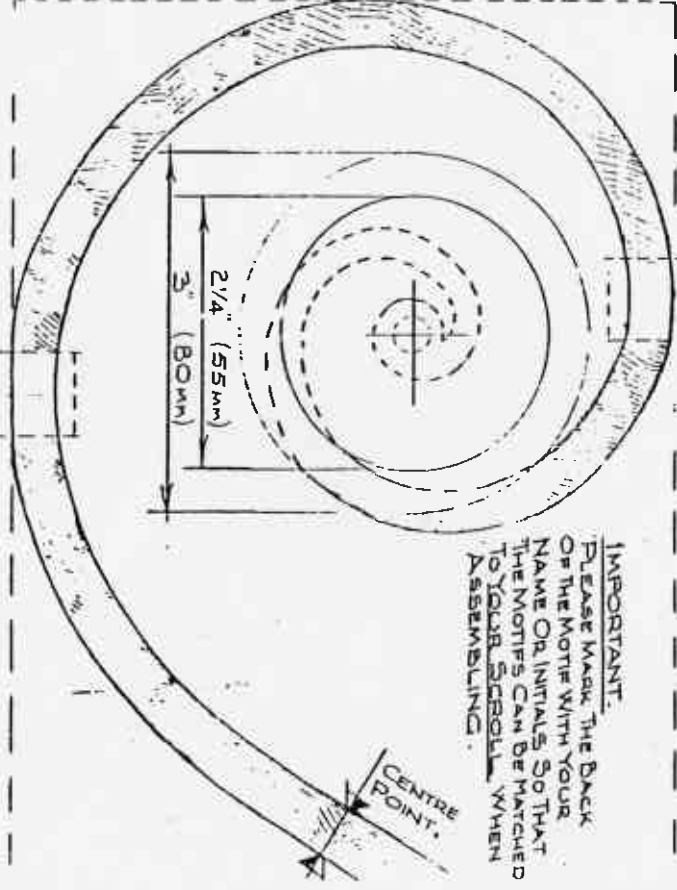
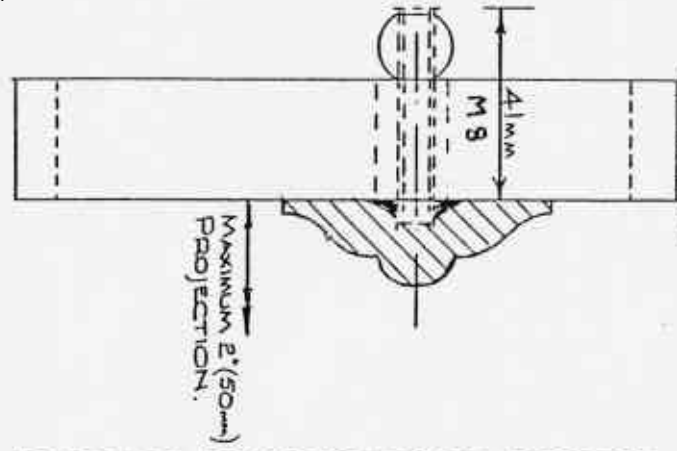
Line shaft, with pulleys & clutches - \$40.00
Contact:

Bernie Tappel
Rt 1 Box 81
Henley, Mo 65040
(314)496-3793



NOTE: THE DESIGN OF THE MOTIF IS ENTIRELY AT THE WHIM AND IMAGINATION OF THE MAKER. I SUGGEST THAT THE SIZE SHOULD BE BETWEEN 2 1/4 (55mm) TO 2" (80mm) ALTHOUGH THE MOTIF NEED NOT BE CIRCULAR AND I SUGGEST A MAXIMUM OF 2" (50mm) PROJECTION, ALTHOUGH THE MOTIF CAN BE COMPLETELY FLAT I SUGGEST FOR MAXIMUM VARIETY THAT THE TWO MOTIFS ARE DIFFERENT RATHER THAN BOTH THE SAME. PLEASE FIX A 6mm THREADED ROD 41mm LONG SECURELY TO THE CENTRE OF THE BACK OF EACH MOTIF.

IMPORTANT.
PLEASE MARK THE BACK OF THE MOTIF WITH YOUR NAME OR INITIALS SO THAT THE MOTIFS CAN BE MATCHED TO YOUR SCROLL WHEN ASSEMBLING.



THE GREAT GATES"
NATIONAL ORNAMENTAL METAL MUSEUM
MEMPHIS, TENNESSEE, U.S.A. © COPYRIGHT RICHARD QUINNELL/NOMM, 1985

1989 BAM Membership

(314)657-4185
06/13/89
Don & Joan Asbee
Rt. 1 Box 2395
Hartsburg, MO 65039

(816)781-1512
01/01/90
Steve Austin
44 N.E. Munger Rd.
Claycomo, MO 64119

()384-3314
12/05/89
David Bailey
6427 Marty
Overland Park, KS 66202

(314)735-2758
01/01/90
Robert Baker
401 Catherine St.
Monroe City, MO 63456

(314)735-2758
01/01/90
Steven E. Baker
411 Catherine St.
Monroe City, MO 63456

(314)735-2758
01/01/90
Barney Baker
401 Catherine St.
Monroe City, MO 63456

()257-4638
01/20/90
Stephen A. Brasier
Rt. 2 Box 225B
Robertsville, MO 63072

06/01/89
Per Y. Brolinson
P.O. Box 443
Louisiana, MO 63353

()635-6183
01/01/89
John Brown
Box 1494
Kearney, MO 64060

(314)892-4086
01/01/90
Emil J. Bubash
3151 Lin-tel Rd.
St. Louis, MO 63125

(314)583-3512
01/01/90
Colin Campbell
Rt. 1 Box 282
Union, MO 63084

01/01/89
Carmen F. Cerra
P.O. box 12431
North Kansas City, MO
64116

(314)438-4725
06/13/90
Tom Clark
H C 87 Box 5780
Potosi, MO 63654

(314)756-3970
12/05/89
Aaron Coleman
Rt. 1 Box 226
Farmington, MO 63640

01/24/90
Bob Crecelius
Rt. 5 Box 5198
Farmington, MO
63640-9805

01/01/90
Clyde N. Crum
P.O. Box 879
Merrimack, NH 03054

(314)859-6431
09/24/89
Lance Cuckler
Box 732
Belle, MO 65013

(314)239-0331
06/13/89
Dillon Industries Int.
P.O. Box 710
Washington, MO 63090

01/24/90
A.W. Dippold
R.F.D. # 3
Perryville, Mo 63775

(314)239-3814
08/01/89
Swede Douglas
Rt. 3 Box 150
Mansfield, MO 65704

(618)893-2216
01/01/90
Roberta Elliot-Francis
Rt. 1 Box 212
Cobden, IL 62920

01/01/90
Maurice L. Ellis
4 Covey Crt.
Florissant, MO 63031

01/01/89
Dale Emily
P.O. Box 626
Sullivan, MO 63080

(314)756-1145
07/01/89
Clay English
Rt. 2 Box 2707
Farmington, MO 63640

(314)456-2338
06/08/89
Julius Enke
207 S. Morgan Rd.
Warrenton, MO 63383

(314)365-1952
03/07/90
Vernon Fischer
Box 756
Rocky Mount, MO 65072

(816)236-4444
04/01/89
Bob Foust
734 Southwest Blvd.
Kansas City, KS 66103

(816)236-4444
04/01/89
Jim Foust
734 Southwest Blvd.
Kansas City, KS 66103

()741-6914
01/13/90
Glenn Garrison
6817 N.W. Cross Road
Parkville, MO 64152

(314)843-1590
01/01/90
Leland Gielow
7129 Gen. Sherman Ln.
St. Louis, MO 63123

09/24/89 Tom Gipe No. 1 Neathammer Lane Edwardsville, IL 63025	(816)763-4450 06/01/89 Grandview Metal and Fabrication Co. 3700 Main P.O. Box 269 Grandview, MO 64030	()296-8667 01/13/90 Kenneth H. Graves 482 Dye Drive Arnold, MO 63010	01/01/90 Walt Hull 2043 Massachusetts Lawrence, KS 66046	08/09/89 Lawrence G. Isbister P.O. Box 201 Imperial, MO 63052	01/01/89 George Kaul 105 N. 8th Lawrence, KS 66044
(217)285-6649 01/13/90 Jerry Grimes 321 E. Jefferson Pittsfield, IL 62363	03/26/89 David W. Harrah Earthworks 8445 Corliss Rd. DeSoto, KS 66018	01/01/89 John Haslag Rt. 3 Box 185 Washington, MO 63090	(816)236-4444 04/01/89 Mike Keller 734 Southwest Blvd. Kansas City, KS 66103	(314)285-3210 01/01/90 Hank Knickmeyer 6300 Crosscreek Cedar Hill, MO 63016	01/24/90 Bob Lemon Rt. 3 Box 3686 Farmington, MO 63640
(314)942-4251 01/13/90 Earl Hawkins 3 Deepwoods Lane Barnhart, MO 63012	()471-3087 01/30/90 Carl Hazel Rt. 2 Box 1285 #1938 Sikeston, MO 63801	01/01/90 Cliff Henderson 7215 Washington Kansas City MO 64114	(314)431-6123 01/01/89 Roger Lewis Hwy 32 & Science St. Flat River, MO 63601	(314)521-8233 04/01/89 Merlin Libby 1321 Hudson Rd. Ferguson, MO 63135	06/13/89 Roger Lorange R.R. 2 Canton, IL 61520
(314)637-2576 01/01/90 Doug Hendrickson Bonnie Hendrickson Peola Valley Forge Rt. 1 Box 16D Lesterville, MO 63654	(314)423-3933 01/01/90 Hirschfeld Welding Services 3636 Marshall Rd. St. Louis, MO 63114	(314)629-4061 06/13/89 Jerry Hoffmann Rt. 1 Box 189 Lonedell, MO 63060	01/01/89 Jim Mangels 1430 Trélane St. Louis, MO 63126	(618)443-5264 01/01/90 Ken Markley Rt. 1 Box 346c Sparta, IL 62286	06/13/89 Pat McCarty Rt. 1 Box 247A Washington, MO 63090
(601)636-9491 01/01/99 Grady + Clarissa C/O Grady Holley, Sr. 613 Egan Ave. Vicksburg, MS 39180	(314)598-3847 08/01/89 Chuck Huff HCR 77 Box 201 Annapolis, MO 63620	()842-2954 01/30/90 Ruth Hull 2043 Massachusetts Lawrence, KS 66046	(314)583-5847 06/13/89 Paul McClure R.R. 4 Box 365 Union, MO 63084	01/24/90 V. J. McCrackin 5720 Hess Rd. House Springs, MO 63051	(417)485-8203 10/30/89 Tom McGinnis P.O. Box 214 Ozark, MO 65721

(314)856-4201
01/01/90
James G. McHaffie
P.O. Box 97
Patterson, MO 63956

01/24/90
John G. McHenry
6365 Crosscreek Rd.
Cedar Hill, MO 63016

(314)838-5975
01/01/90
Bill Miller
Blacksmith, Horseshoer
810 Derhake
St. Louis, MO 63033

01/01/89
Dale Moody
Rt. 5 Box 209
Marshall, AR 72650

(816)677-4740
04/01/89
Walt Murphy
1900 W. 75th St.
Prairie Village, KS
66208

(314)227-1840
06/01/89
John Murray
Shadetree Ironworks
402 Marie Ln,
Manchester, MO 63011

(816)763-4450
04/01/89
Brent Nichols
P O Box 269
Grandview, MO 64030

(314)781-0586
10/30/89
Bob Pace
6539 Bancroft
St. Louis, MO 63109

(816)761-6271
04/01/89
Pete Peterson
3301 Robinson Rike
Grandview, MO 64030

(816)761-6271
04/01/89
John Peterson
3301 Robinson Pike
Grandview, MO 64030

(314)875-0245
10/30/89
Charles V. Pregaldin
2000 McAlester St.
Columbia, MO 65201

(314)664-2910
06/01/89
Vernon A. Ruble
3417 A Hartford
St. Louis, MO 63118

()376-6305
01/30/90
Fabian Schilly
4612 Lark
High Ridge, MO 63049

04/01/89
R. L. Shepherd
Miacomet Ave.
P.O. Box 1295
Nantucket, MA 02554

06/08/89
John Sherwood
4552 Schumacher
High Ridge, MO 63049

(314)521-6094
06/08/89
Melvin T. Shoptaw
11 S. Dellwood
Dellwood, MO 63135

(816)231-6633
01/01/90
Dan A Siglar
315 S. Lawn
Kansas City, MO 64124

(314)524-8467
01/01/89
James A. Stephens
5613 Parrchester
St. Louis, MO 63121

(314)524-8467
01/01/90
Al Stephens
5613 Parrchester Dr.
Normandy, MO 63121

(314)285-5515
01/04/89
Fred J. T. Stock
6195 N. Lakeshore Dr.
Hillsboro, MO 63050

(417)833-9601
10/30/89
Kirk Sullens
Rt. 20 Box 225
Springfield, MO 65803

01/01/89
James Tanner
P.O. Box 365
Union, MO 63084

(314)496-3793
01/01/90
Bernard Tappel
Patti Tappel
Rt. 1 Box 81
Henley, MO 65040

(314)629-3099
12/05/89
Carl Thiessen
Rt. 4 Box 191A
Sullivan, MO 63080

(314)782-3433
01/01/90
James A. Thomas
Rt. 1 Box 102A
Lohman, MO 65053

(314)296-0262
07/05/89
Mike Tutass
5340 Stader Lane
St. Louis, MO 63128

(618)332-0883
12/05/89
K.E. Valdejo
1121 St. Bartholomew
Cakokia, IL 66206

(314)431-4856
06/13/89
Jerry R. Wallen
1003 Griffith
Esther, MO 63601

04/01/89
Jim Waller
5651 Heads Creek Rd
House Springs, MO 63051

01/24/90
Roy A. Warden
R 2 Box 138-2
Union, MO 63084

(314)474-4640
01/01/90
James L. Watson
3705 Rutledge Drive
Columbia, MD 65202

01/01/99
Francis Whitaker
1493 County Road 106
1 CRHS
Carbondale, CO 81623

(314)869-9992
01/01/90
Dan Whitmore
9741 Lanier
St. Louis, MO 63136

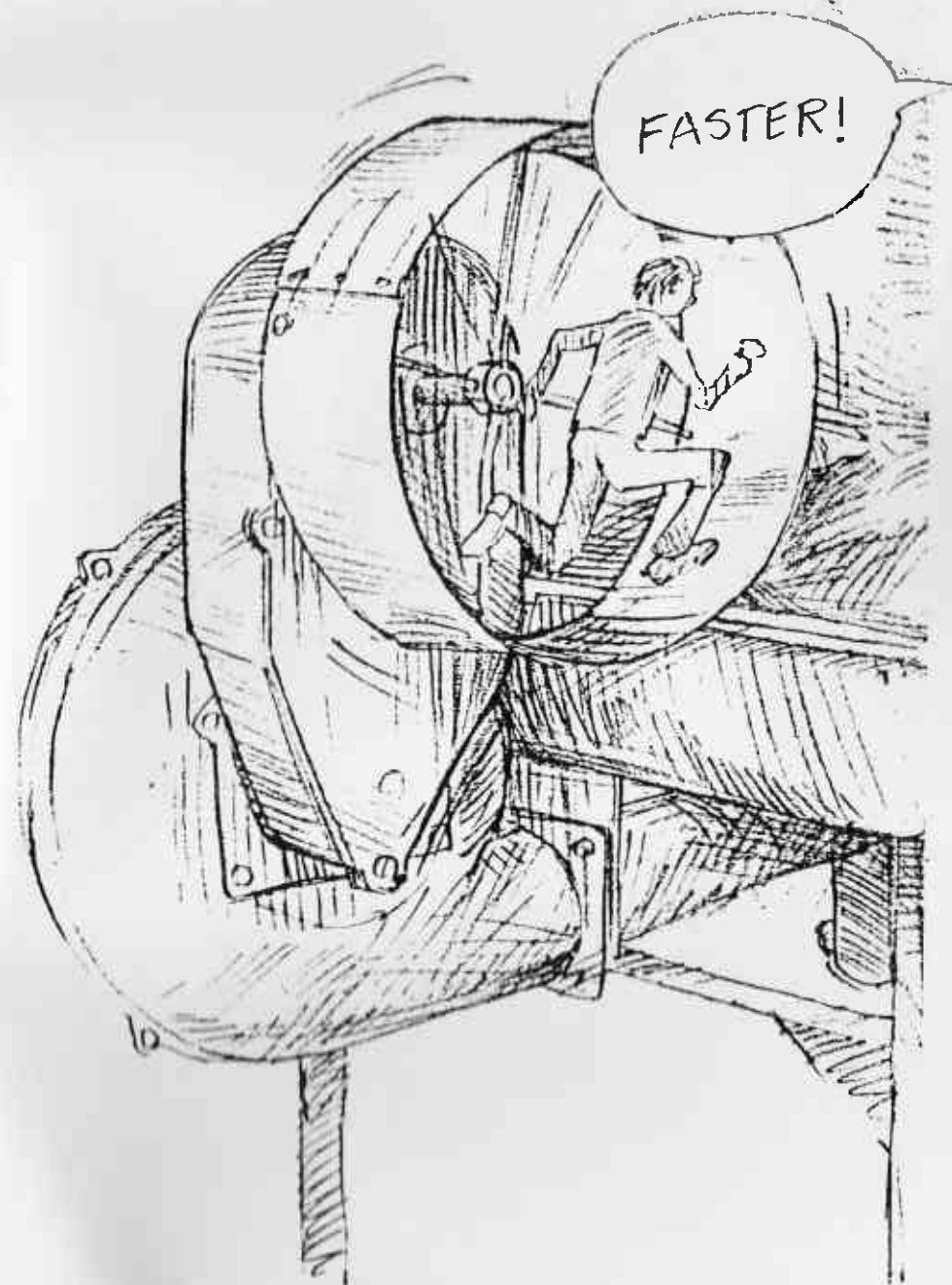
(316)583-6939
06/13/89
Harold Wiggins
R.R. 3 Box 32
Eureka, KS 67045

(314)486-5544
09/01/89
John Wilding
523 West 9th
Hermann, MO 65041

(314)883-2887
01/01/90
Stanley Winkler
Muleskinner Forge
202 Main St.
Ste. Genevieve, MO 63670

()331-8076
01/01/90
Robert Wright
216 Park Drive
Belton, MO 64012

100 USES FOR A GRUBBY LITTLE BLACKSMITH



BAM
R.R. 1 BOX 16D
LESTERVILLE, MO 63654

ADDRESS CORRECTION REQUESTED